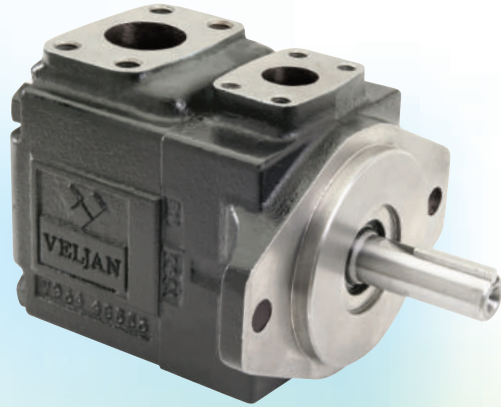




Your fast/reliable source for genuine Veljan Products



- Single Pumps
- Double Pumps
- Triple Pumps
- Drive Train
- Vane Motors
- Flange Mounted Valves



T6/T7 Single Vane Pump



T6 Drive Train
Vane Pump



T6/T7 Double Vane Pump



M4 Series Vane Motor

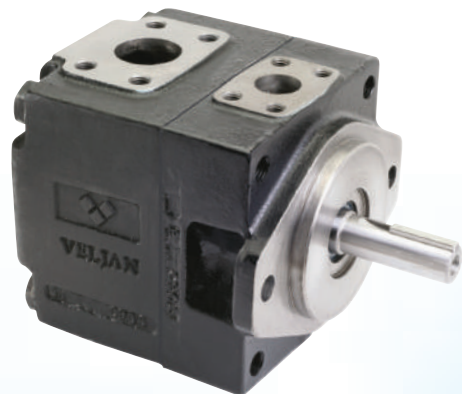
www.FluidDyneFP.com
Email: cs@FluidDyneFP.com



T6 & T7 Pumps Single/Double/Triple/Drive Train

Veljan Vane Pumps and Motors Provide:

- Cartridge kit design for ease of maintenance
- High pressure capabilities to 4,650 psi providing compact size and high power
- Balanced design for extended bearing life
- Engineered surfaces and finishes for high contamination resistance
- High drive speed design allows reliable operation with Water-Glycol fluid
- Extreme low noise even in high pressure applications
- Single/double/triple pumps for space saving mounting and fewer plumbing connections
- Standard A, B, C or D face mounting for installation compatability
- High tolerance to shock and vibration



SINGLE PUMPS

Model No.	Max Press		Displacement		Max Speed	Weight
	psi	bar	in ³ /rev	cm ³ /rev	rpm	lbs
VT6C	4000	275	0.66 - 6.10	11 - 100	2800	35
VT6D	3500	240	2.90 - 11.62	48 - 190	2500	53
VT6E	3500	240	8.07 - 16.40	132 - 270	2200	95
VT6CM	4000	275	0.66 - 6.10	11 - 100	2800	35
VT6CP	4000	275	2.81 - 6.10	46 - 100	2800	40
VT6DM	3500	240	2.90 - 11.65	48 - 190	2500	53
VT6EM	3500	240	8.07 - 16.40	132 - 270	2200	95
VT7B/BS	4650	320	0.35 - 3.05	6.0 - 50	3600	52
VT7D/DS	4350	300	2.68 - 9.64	44 - 158	3000	58
VT7E/ES	3500	240	8.07 - 16.40	132. - 270	2200	96



T6/T7 Single Vane Pump



T6 Drive Train Vane Pump

DRIVE TRAIN SERIES

Model No.	Max Press		Displacement		Max Speed	Weight
	psi	bar	in ³ /rev	cm ³ /rev	rpm	lbs
VT6CR	4000	275	0.66 - 6.1	11 - 100	2800	38
VT6DR	3500	240	2.90 - 11.65	48 - 190	2500	65
VT6ER	3500	240	8.07 - 16.4	132 - 270	2200	87
VT6CRM	4000	275	0.66 - 6.1	11 - 100	2800	38
VT6DRM	3500	240	2.90 - 11.65	48 - 190	2500	65
VT6ERM	3500	240	8.07 - 16.4	132 - 270	2200	87
VT6DCCR	4000	275	4.22 - 23.84	70 - 390	2500	137
VT6EDCR	4000	275	11.63 - 34.15	191 - 560	2200	221
VT7EE/EES	3500	240	32.8	264 - 540	2200	210

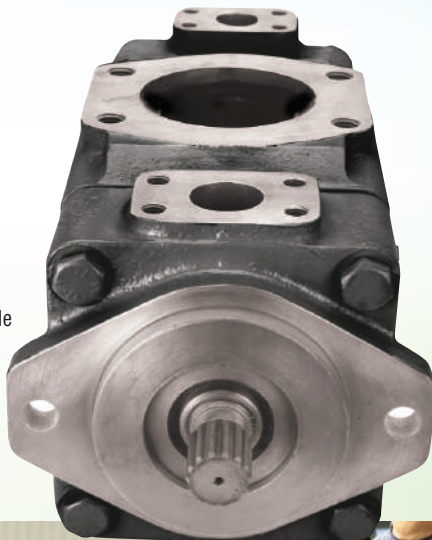


DOUBLE PUMPS

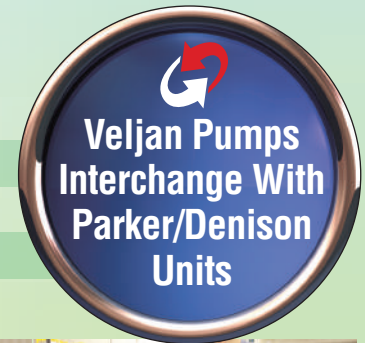
Model No.	Max Press		Displacement		Max Speed	Weight
	psi	bar	in ³ /rev	cm ³ /rev	rpm	lbs
VT6CC	4000	275	1.32 - 12.20	22.0 - 200	2800	60
VT6DC	4000	275	3.56 - 17.75	59 - 290	2500	81
VT6DDS	3500	240	5.80 - 23.3	96 - 380	2500	125
VT6EC	4000	275	8.73 - 22.56	143 - 370	2200	121
VT6ED	3500	240	11.0 - 28.06	180 - 460	2200	146
VT6EE/EES	3500	240	16.1 - 32.8	264 - 540	2200	210
VT6CCM	4000	275	1.32 - 12.20	22 - 200	2800	60
VT6CCZ	4000	275	1.32 - 12.20	22 - 200	2800	60
VT6DCM	4000	275	3.56 - 17.75	59 - 290	2500	81
VT6ECM	4000	275	8.73 - 22.56	143 - 370	2200	121
VT6EDM	3500	240	11.0 - 28.06	180 - 460	2200	146
VT7BB/BBS	4650	320	0.70 - 6.10	12 - 100	3600	72
VT7DB/DBS	4350	300	3.03 - 12.69	50 - 208	2200	86
VT7DD/DDS	3600	250	5.36 - 19.28	88 - 316	2500	125
VT7EB/EBS	4350	300	8.42 - 19.45	138 - 319	2200	121
VT7ED/EDS	3600	250	10.7 - 26.00	176 - 427	2200	146
VT7EE/EES	3500	240	16.1 - 32.8	264 - 540	2200	210
VT67BB	4350	300	0.35 - 3.05	12 - 200	2800	60
VT67CB	4350	300	1.01 - 9.15	17 - 150	2800	60
VT67DB	4350	300	3.25 - 14.7	54 - 240	2500	86
VT67EB	4350	300	8.42 - 19.45	138 - 320	2200	121
VT67EC	4000	275	8.73 - 22.5	143 - 370	2200	121



T6/T7 Double Vane Pump

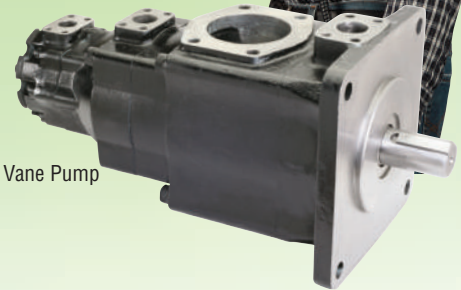


T6/T7 Double Vane Pump



TRIPLE PUMPS

Model No.	Max Press		Displacement		Max Speed	Weight
	psi	bar	in ³ /rev	cm ³ /rev	rpm	lbs
VT6DCC	4000	275	4.22 - 23.94	70 - 390	2500	135
VT6DDCS	4000	275	6.46 - 29.34	107 - 480	2500	146
VT6EDC	4000	275	11.63 - 34.15	91 - 560	2200	225
VT6DCCM	4000	275	4.22 - 23.94	70 - 390	2500	135
T6EDCM/S	4000	275	11.63 - 34.15	191 - 560	2200	225
VT7DBB(S)	4350	300	3.60 - 17.75	56 - 258	2500	135
VT7DDB(S)	4350	300	5.71 - 22.33	94 - 366	2500	146
VT7EDB(S)	4350	300	11.1 - 29.1	182 - 478	2200	225
VT67DBB	4350	300	3.60 - 17.75	60 - 290	2500	135
VT67DCC	4000	275	4.0 - 21.84	66 - 358	2200	135
VT67DCB	4350	300	3.91 - 20.8	64 - 341	2200	135
VT67DDCS	4000	275	6.0 - 25.38	99 - 416	2200	146
VT67EDB	4350	300	6.15 - 26.3	186 - 510	2500	225
VT67EDC	4000	275	32.14	187 - 528	2200	225



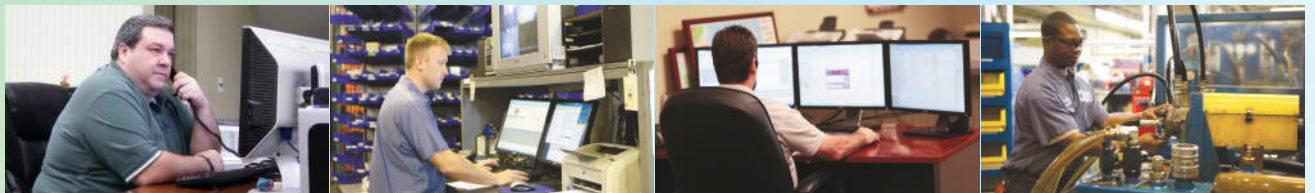
Triple Vane Pump



M4 Series Vane Motor

MOTORS

Model No.	Max Press		Displacement		Torque Max		Speed	Weight
	psi	bar	in ³ /rev	cm ³ /rev	in-lbs	Nm	rpm	lbs
VM3B/B1	3000	210	0.56 - 2.26	9 - 37	174 - 903	20 - 102	4000	18
VM4C/C1	2500	175	1.40 - 4.89	24 - 80	535 - 1752	61 - 198	4000	35
VM4D/D1	2500	175	3.97 - 8.81	65 - 144	1460 - 3292	165 - 372	4000	60
VM4E/E1	2500	175	9.67-13.55	158 - 222	3522 - 5018	398 - 567	3600	100



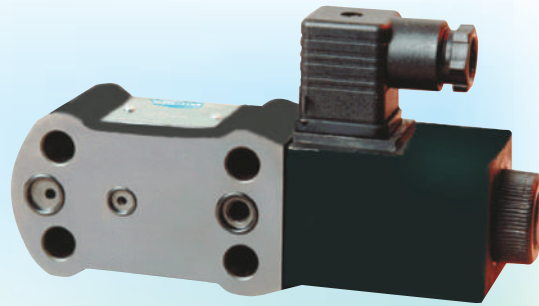
Flange Mounted Pressure Control Valves

- Relief, Unloading, and Sequence Valves
- Available Sizes 3/4", 1", 1-1/4", 1-1/2"
- Conforms to SAE J518 Code 61/62
- With / Without Solenoid Vent Valve

Veljan VR5V, VR5U, VR5S

SERIES	SIZE		MAX. FLOW		MAX. PR.	
	IN	MM	GPM	LPM	PSI	BAR
VR5* 06	3/4"	20	24	90	5000	350
VR5* 08	1"	25	28	300	5000	350
VR5* 10	1-1/4"	32	159	600	5000	350
VR5* 12	1-1/2"	38	159	600	5000	350
VVV01 Electronic Vent Valve			1	3.8	5000	350

* = "V" RELIEF, "U" UNLOADING, "S" SEQUENCE



Veljan Stack Mounted Vent Valve (VVV01):

- Works with VR4*, VR5*, VD4S, VCAR
- Energize or De-energize to Vent Option
- Coils in both DC and AC Voltage, 50/60 Hz (12, 24, 48 VDC; 115, 230 VAC, 50 or 60 Hz)



Flange Mounted Check Valve

- Available with Face Seal
- Additional X-Port for Unloader Option
- Conforms to SAE J518 Code 61/62 (Code 62 available in 1-1/2" only)

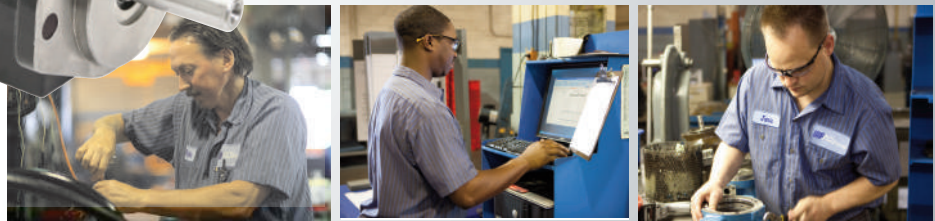
Veljan Flange Mounted Check Valves

SERIES	SIZE		MAX. FLOW		MAX. PR.	
	IN	MM	GPM	LPM	PSI	BAR
VC5V06	3/4"	20	26	100	3000	210
VC5V08	1"	25	53	200	3000	210
VC5V10	1-1/4"	32	106	400	3000	210
VC5V12	1-1/2"	38	198	750	3000	210
VC5V16	2"	50	198	750	3000	210

FluiDyne supports the distributors providing local knowledge and assistance to fluid power customers.

Our people provide extensive support:

- Engineering expertise
- Decoding special part number
- Identification of parts within units
- Advise on component repair and assembly
- Component failure analysis
- Massive local stock
- New application component selection
- Same day shipment
- 18 month warranty



**Powered by
Customer
Service!**



31915 Groesbeck Highway • Fraser, Michigan 48026
PH: 1-586-296-7200 • FAX: 1-586-296-7210
Email: cs@FluiDyneFP.com

www.FluiDyneFP.com