



Pressure Control Valves

Relief • Single • Multi Pressure • Remote • Solenoid • Manual



www.FluidDyneFP.com

Fluidyne Pressure Control Valves

- Increased machine productivity
- Improved machine performance
- Extended machine durability & reliability
- Higher machine efficiency
- Precise and consistent speed control
- Extremely low flow regulation capability

Fluidyne hydraulic products and systems are engineered for reliable continuous performance in the world's most demanding and rigorous applications.

Fluidyne's pressure control valves are used to control machine functions for cutting, grooving, boring, clamping, injecting, pressing, forming, or to lift, dig, haul, or roll... day in and day out, in both industrial or mobile applications.

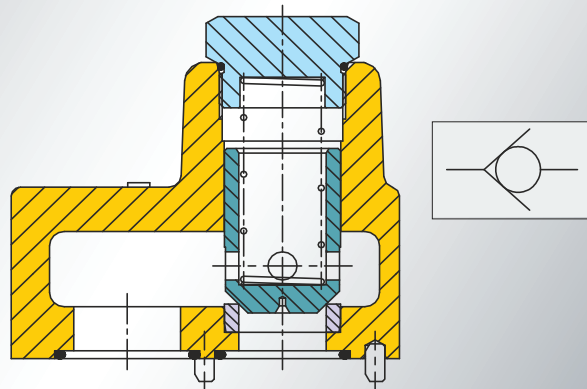
Pressure control valves perform pressure relieving, reducing, sequencing, and unloading control in both subplate and in-line mounting with various control types including remote, multiple pressure, and venting.

Fluidyne's temperature and pressure compensated flow controls allow precise volumetric control. Suitable for pressures up to 3000 psi, flow controls are available with (bypass type) or without (resistor type) integral relief valves.

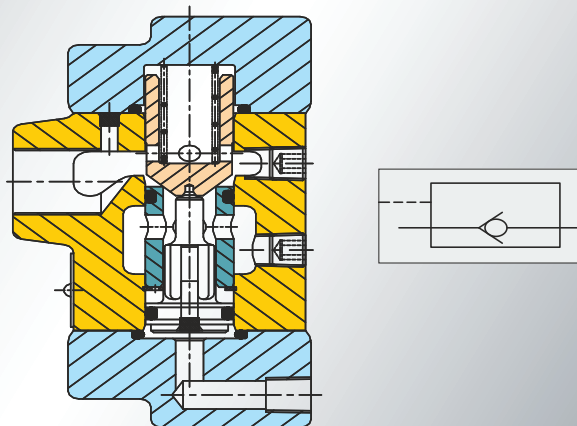
Fluidyne's non compensated adjustable flow control valves are suited for applications requiring flow regulation without pressure compensation.



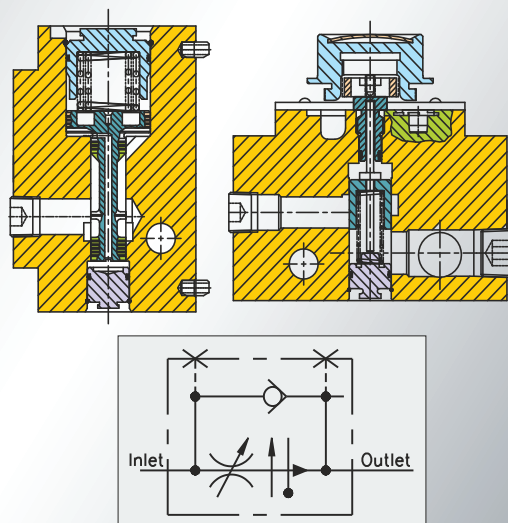
Manifold mounted check valves C5G 8



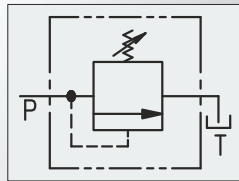
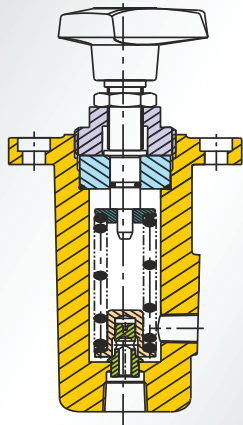
Pilot-operated check valves 4CG, 4CS, 4CT



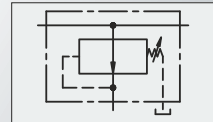
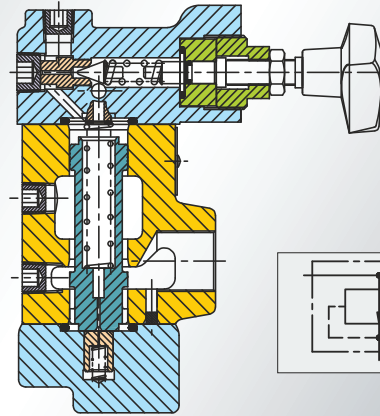
Pressure & temp. comp. flow control valves FCG



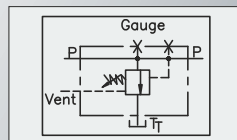
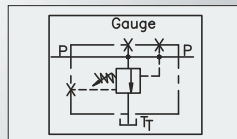
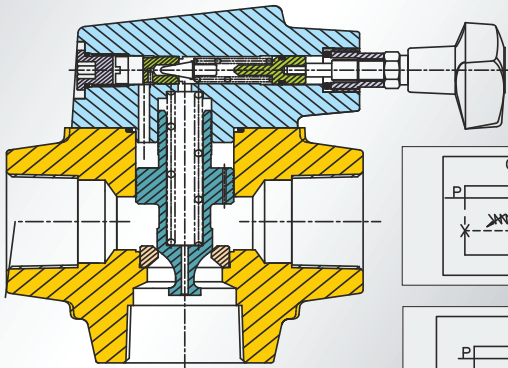
Panel mount relief valve C175



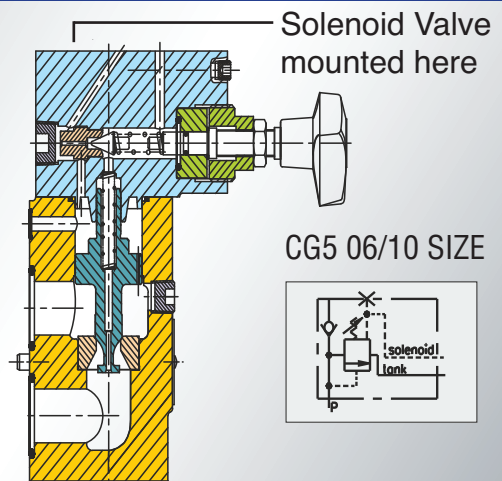
Press. Reducing Valves XG, XT; 03,06,10 sizes



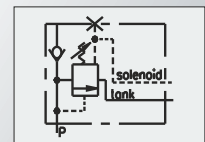
Relief valves CG, CS, CT; 03,06,10 sizes



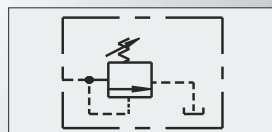
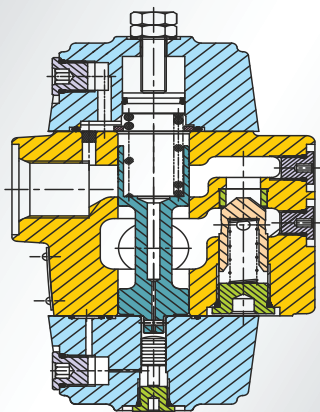
Solenoid Controlled Pilot Operated Relief Valve (Gasket connection)



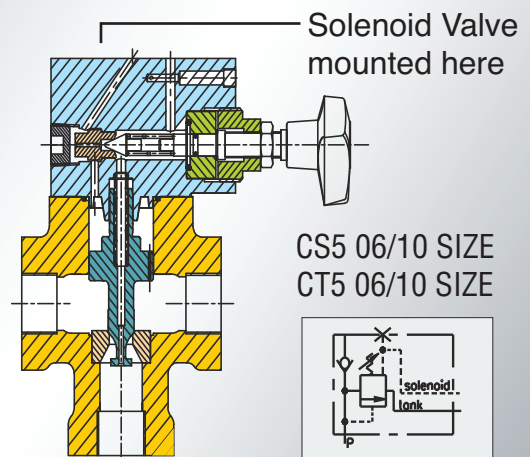
CG5 06/10 SIZE



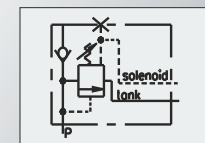
Press. Control Valves RG, RS, RT, RCG, RCS, RCT; 03,06,10 sizes



Solenoid Controlled Pilot Operated Relief Valve (Threaded connection)



CS5 06/10 SIZE
CT5 06/10 SIZE





FluidDyne supports the distributors providing local knowledge and assistance to fluid power customers.

Our people provide extensive support:

- Engineering expertise
- Decoding special part number
- Identification of parts within units
- Advise on component repair and assembly
- Component failure analysis
- Massive local stock
- New application component selection
- Same day shipment
- 18 month warranty

**Our people
make the
difference!**



31915 Groesbeck Highway • Fraser, Michigan 48026
PH: 1-586-296-7200 • FAX: 1-586-296-7210
Email: cs@FluidDyneFP.com

www.FluidDyneFP.com

An ISO 9001:2008 Company

