

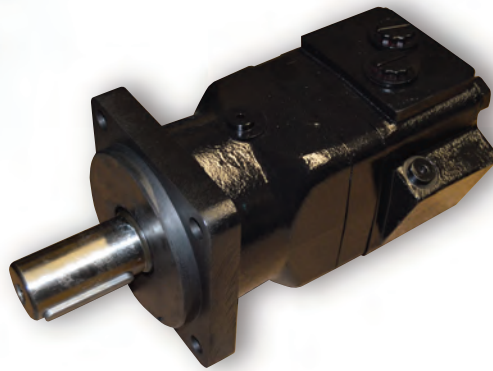


## Low Speed, High Torque Motors

J Series, H Series, S Series, 500, 2000, 4000, 6000, 10,000

### Interchangeable with:

- Charlynn
- White
- Ross
- Parker
- TRW
- Danfoss



# Index

FluiDyne 129 - J Series.....	3
FluiDyne 101 - H Series .....	4
FluiDyne FM1 Series.....	5
FluiDyne 103 - S Series .....	6
FluiDyne FM3 Series.....	7
FluiDyne 500 Series .....	8
FluiDyne FM50 Series.....	9
FluiDyne FM51 Series.....	10
FluiDyne 104 - 2000 Series.....	11
FluiDyne 104Y - 2000 Series .....	12
FluiDyne FM4 Series.....	13
FluiDyne 109 - 4000 Series.....	16
FluiDyne 112 - 6000 Series.....	17
FluiDyne 119 - 10,000 Series .....	18
FluiDyne Line Card.....	19

## Motor Cross Reference Guide

FLUIDYNE	EATON/ CHARLYNN	DANFOSS/ SAUER	ROSS/ TRW	WHITE/ CROSS	PARKER	BREVINI/ SAM	BOSCH/ REXROTH	M+S	YOUNG POWER TECH	DYNAMIC
129	J	OMM, WM	-	-	-	BGM	MGX	MLHM	YMM	BMM
101 FM1	H,A	OMP, DH	MF, MG	WP, RS, 200	TC, TE, TB	BG	MGP, GMP	MLHP	YMPH	BMPH
103 FM3	S,T	OMR, DS, OMEW	MB, MF, MG	WR, RE, 255	TB, TE, TF, MG, MF	BREVINI	MGR, GMR	MLHR	YMRS	BMRS
500 FM50/51	DELTA, 184	OMR, OMEW OMRW,OMH	MP, MB, ME, MF, MJ	RE 500	TJ, TF, TL, TG	-	-	HW	YME2	BMER, BMH
104 FM4	2000	OMS	ME	HB, RE, 300, WS 350	TG	HPR	MGS, GMS	MS, MSY, MLHS	YMSE	BMS, BMSY
109	4000	-	-	-	TG, TH, TK, ME, MJ	-	-	MLHS, MLHT	YMT, YMTE	BMT, BMTS
112	6000	OMT, TMT	MJ	RE, DR, 500, 600	TH, TK, ME, MJ	HT	MGT, GMT	MH, MLHH, HW, HWF	YMT, YMTE	BMK6
119	10000	OMV	-	DT	-	-	MGV, GMV	MV, MLHV	YMV	BMV



# FluiDyne 129 - J SERIES

**J SERIES**

FluiDyne			DISPLACEMENT cc/r (in <sup>3</sup> /r)				
			8.0 cc 8.2 (0.50)	12 cc 12.9 (0.79)	20 cc 19.9 (1.21)	32 cc 31.6 (1.93)	50 cc 50.3 (3.07)
Char-Lynn Reference			8.2 cc (0.50)	12.9 cc (0.79)	19.8 cc (1.21)	31.6 cc (1.93)	50 cc (3.0)
MOUNTING	SHAFTS	PORTS					
1/4-28 UNF 2B 3-BOLT VS 5-BOLT CHAR-LYNN	5/8" KEYED	9/16-18 O-RING END PORTED	WF1290001	WF1290002	WF1290003	WF1290004	WF1290458
	11/16" KEYED		WF1290295	WF1290296	WF1290297	WF1290298	WF1290459
	9T-METRIC SPLINE 16.5MM		WF1290299	WF1290300	WF1290301	WF1290302	WF1290460
	5/8" KEYED	9/16-18 O-RING SIDE PORTED	WF1290339	WF1290018	WF1290019	WF1290020	WF1290470
	11/16" KEYED		WF1290343	WF1290344	WF1290345	WF1290346	WF1290471
	9T-METRIC SPLINE		WF1290347	WF1290348	WF1290349	WF1290350	WF1290472
M6 X 1 - 6H 3-BOLT VS 5-BOLT CHAR-LYNN	16MM KEYED	G3/8 (BSP) END PORTED	WF1290327	WF1290328	WF1290329	WF1290330	WF1290467
	18MM KEYED		WF1290331	WF1290332	WF1290333	WF1290334	WF1290468
	9T-METRIC SPLINE		WF1290335	WF1290336	WF1290337	WF1290338	WF1290469
	16MM KEYED	G3/8 (BSP) SIDE PORTED	WF1290371	WF1290372	WF1290373	WF1290374	WF1290403
	18MM KEYED		WF1290375	WF1290376	WF1290377	WF1290378	WF1290478
	9T-METRIC SPLINE		WF1290379	WF1290380	WF1290381	WF1290382	WF1290479
2-BOLT (63MM PILOT) 2X0.35" DIA. HOLES	5/8" KEYED	9/16"-18 O-RING END PORTED	WF1290097	WF1290098	WF1290099	WF1290100	—
		9/16"-18 O-RING SIDE PORTED	WF1290701	WF1290513	WF1290520	WF1290507	—
	16MM KEYED	G3/8 (BSP) END PORTED	WF1290117	WF1290118	WF1290119	WF1290120	WF1290454
		G3/8 (BSP) SIDE PORTED	WF1290101	WF1290102	WF1290103	WF1290104	WF1290410
MAX TORQUE (IN-LBS)	CONTINUOUS		97	142	221	354	407
	INTERMITTENT		133	203	310	504	778
MAX PRESSURE (PSI)	CONTINUOUS		1,450	1,450	1,450	1,450	1,015
	INTERMITTENT		2,030	2,030	2,030	2,030	2,030
MAX FLOW (GPM)	CONTINUOUS		4.5	5.5	5.5	5.5	5.5
	INTERMITTENT		5.5	6.5	6.5	6.5	6.5
MAX RPM	CONTINUOUS		1,950	1,550	1,000	630	400
	INTERMITTENT		2,450	1,940	1,250	800	500
WEIGHT (LBS)			4.4	4.6	4.8	5.0	5.4

Additional mounts and porting available.

Visit our website [www.FluiDyneFP.com](http://www.FluiDyneFP.com) for additional information or contact customer service with your requirements.



[sales@FluiDyneFP.com](mailto:sales@FluiDyneFP.com) • [www.FluiDyneFP.com](http://www.FluiDyneFP.com)



## Fluidyne 101 H Series 009 Design

Fluidyne Char-Lynn Reference			DISPLACEMENT cc/r (in <sup>3</sup> /r)									
			36 cc (2.2)	50 cc (3.15)	80 cc (4.74)	100 cc (6.1)	125 cc (7.7)	160 cc (9.7)	200 cc (12.2)	250 cc (15.3)	315 cc (19.2)	400 cc (24.4)
MOUNTING	SHAFTS	PORTS	36 cc (2.2)	46 cc (2.8)	59 cc (3.6)	97 cc (5.9)	120 cc (7.3)	159 cc (9.7)	185 cc (11.3)	231 cc (14.1)	293 cc (17.9)	370 cc (22.6)
2 BOLT FLANGE MOUNT	1" WOODRUFF KEYED	7/8"-14 O-RING	WF1011700	WF1011033	WF1011034	WF1011035	WF1011702	WF1011036	WF1011037	WF1011038	WF1011039	WF1011040
		1/2" NPT	WF1011704	WF1011025	WF1011026	WF1011027	WF1011706	WF1011028	WF1011029	WF1011030	WF1011031	WF1011032
		MANIFOLD	WF1011708	WF1011041	WF1011042	WF1011043	WF1011710	WF1011044	WF1011045	WF1011046	WF1011047	WF1011048
	1" SAE 6B SPLINED	7/8"-14 O-RING	WF1011721	WF1011081	WF1011082	WF1011083	WF1011723	WF1011084	WF1011085	WF1011086	WF1011087	WF1011088
		1/2" NPT	WF1011725	WF1011073	WF1011074	WF1011075	WF1011727	WF1011076	WF1011077	WF1011078	WF1011079	WF1011080
		MANIFOLD	WF1011729	WF1011089	WF1011090	WF1011091	WF1011731	WF1011092	WF1011093	WF1011094	WF1011095	WF1011096
	25mm KEYED	7/8"-14 O-RING	WF1012241	WF1012242	WF1012022	WF1012529	—	WF1012174	—	—	WF1015017	WF1013028
		1/2" NPT	—	WF1012023	WF1012784	WF1012708	—	WF1013228	WF1012811	WF1012501	WF1012812	WF1012785
	4 BOLT FLANGE MOUNT	1" WOODRUFF KEYED	7/8"-14 O-RING	WF1011749	WF1011009	WF1011010	WF1011011	WF1011751	WF1011012	WF1011013	WF1011014	WF1011015
1/2" NPT			WF1011753	WF1011001	WF1011002	WF1011003	WF1011755	WF1011004	WF1011005	WF1011006	WF1011007	WF1011008
MANIFOLD			WF1011757	WF1011017	WF1011018	WF1011019	WF1011759	WF1011020	WF1011021	WF1011022	WF1011023	WF1011024
1" SAE 6B SPLINED		7/8"-14 O-RING	WF1011761	WF1011057	WF1011058	WF1011059	WF1011872	WF1011060	WF1011061	WF1011062	WF1011063	WF1011064
		1/2" NPT	WF1011764	WF1011049	WF1011050	WF1011051	WF1011766	WF1011052	WF1011053	WF1011054	WF1011055	WF1011056
		MANIFOLD	WF1011768	WF1011065	WF1011066	WF1011067	WF1011770	WF1011068	WF1011069	WF1011070	WF1011071	WF1011072
4 BOLT MAGNETO MOUNT	1" WOODRUFF KEYED	7/8"-14 O-RING	—	—	WF1012582	—	—	—	WF1012077	—	—	WF1013136
	1" SAE 6B SPLINED	7/8"-14 O-RING	—	—	—	—	WF1012718	WF1012930	—	WF1012931	WF1012932	—
MAX TORQUE (IN-LBS)	CONTINUOUS		504	717	1142	1425	1788	1806	2292	2877	3054	3850
	INTERMITTENT		672	956	1513	1885	2372	3027	3452	4036	4470	4717
MAX PRESSURE (PSI)	CONTINUOUS		1,840	1,813	1,813	1,813	1,813	1,813	1,596	1,596	1,596	1,451
	INTERMITTENT		2,425	2,394	2,394	2,394	2,394	2,394	2,394	2,031	1,813	1,523
MAX FLOW (GPM)	CONTINUOUS		10	12	16	16	16	16	16	16	16	16
	INTERMITTENT		12	13	20	20	20	20	20	20	20	20
MAX RPM	CONTINUOUS		1050	850	650	520	390	310	260	200	156	130
	INTERMITTENT		1270	879	740	589	475	370	296	237	189	149
WEIGHT (LBS)			12	12	13	13	13	14	14	15	15	16

Additional mounts and porting available.

Visit our website [www.FluidyneFP.com](http://www.FluidyneFP.com) for additional information or contact customer service with your requirements.



# FluidDyne FM1 Series

## FM1 SERIES

### FluidDyne FM1 Series

ALL MOTORS IN THIS CHART HAVE BLACK PAINT, CORRESPONDING CASE DRAIN AND BUNA SEALS

MOUNTING	SHAFT	PORTS	DISPLACEMENT cc (in <sup>3</sup> )												
			50 cc (3.05)	63 cc (3.843)	80 cc (4.88)	100 cc (6.1)	125 cc (7.625)	160 cc (9.76)	200 cc (12.2)	250 cc (15.25)	315 cc (19.215)	400 cc (24.4)	500 cc (30.5)		
SAE A 2-BOLT MOUNT	1" KEYED	7/8" -14	FM10001	FM10002	FM10003	FM10004	FM10005	FM10006	FM10007	FM10008	FM10009	FM10010	FM10011		
		1/2" NPTF	FM10012	FM10013	FM10014	FM10015	FM10016	FM10017	FM10018	FM10019	FM10020	FM10021	FM10022		
		G 1/2	FM10023	FM10024	FM10025	FM10026	FM10027	FM10028	FM10029	FM10036	FM10031	FM10032	FM10033		
	1" SAE 6B SPLINED	Manifold	FM10034	FM10035	FM10037	FM10030	FM10038	FM10039	FM10040	FM10041	FM10042	FM10043	FM10044		
		7/8" -14	FM10045	FM10046	FM10047	FM10048	FM10049	FM10050	FM10051	FM10052	FM10053	FM10054	FM10055		
		1/2" NPTF	FM10056	FM10057	FM10058	FM10059	FM10060	FM10061	FM10062	FM10063	FM10064	FM10065	FM10066		
	7/8"-13T SPLINED	G 1/2	FM10067	FM10068	FM10069	FM10070	FM10071	FM10072	FM10073	FM10074	FM10075	FM10076	FM10077		
		Manifold	FM10078	FM10079	FM10080	FM10081	FM10082	FM10083	FM10084	FM10085	FM10086	FM10087	FM10088		
		7/8" -14	FM10089	FM10090	FM10091	FM10092	FM10093	FM10094	FM10095	FM10096	FM10097	FM10098	FM10099		
	25 mm KEYED	1/2" NPTF	FM10100	FM10101	FM10102	FM10103	FM10104	FM10105	FM10106	FM10107	FM10108	FM10109	FM10110		
		G 1/2	FM10111	FM10112	FM10113	FM10114	FM10115	FM10116	FM10117	FM10118	FM10119	FM10120	FM10121		
		Manifold	FM10122	FM10123	FM10124	FM10125	FM10126	FM10127	FM10128	FM10129	FM10130	FM10131	FM10132		
	32 mm KEYED	7/8" -14	FM10133	FM10134	FM10135	FM10136	FM10137	FM10138	FM10139	FM10140	FM10141	FM10142	FM10143		
		1/2" NPTF	FM10144	FM10145	FM10146	FM10147	FM10148	FM10149	FM10150	FM10151	FM10152	FM10153	FM10154		
		G 1/2	FM10155	FM10156	FM10157	FM10158	FM10159	FM10160	FM10161	FM10162	FM10163	FM10164	FM10165		
	4 BOLT SQUARE MOUNT	1" KEYED	Manifold	FM10166	FM10167	FM10168	FM10169	FM10170	FM10171	FM10172	FM10173	FM10174	FM10175	FM10176	
			7/8" -14	FM10177	FM10178	FM10179	FM10180	FM10221	FM10182	FM10183	FM10184	FM10185	FM10186	FM10187	
			1/2" NPTF	FM10188	FM10189	FM10190	FM10191	FM10192	FM10193	FM10194	FM10195	FM10196	FM10197	FM10198	
		1" SAE 6B SPLINED	G 1/2	FM10199	FM10200	FM10201	FM10202	FM10203	FM10204	FM10205	FM10206	FM10207	FM10208	FM10209	
			Manifold	FM10210	FM10211	FM10212	FM10213	FM10214	FM10215	FM10216	FM10217	FM10218	FM10219	FM10220	
			7/8" -14	FM10181	FM10222	FM10223	FM10224	FM10225	FM10226	FM10227	FM10228	FM10229	FM10230	FM10231	
		7/8"-13T SPLINED	1/2" NPTF	FM10232	FM10233	FM10234	FM10235	FM10236	FM10237	FM10238	FM10239	FM10240	FM10241	FM10242	
			G 1/2	FM10243	FM10244	FM10245	FM10246	FM10247	FM10248	FM10249	FM10250	FM10251	FM10252	FM10253	
			Manifold	FM10254	FM10255	FM10256	FM10257	FM10258	FM10259	FM10260	FM10261	FM10262	FM10263	FM10264	
25 mm KEYED		7/8" -14	FM10265	FM10266	FM10267	FM10268	FM10269	FM10270	FM10271	FM10272	FM10273	FM10274	FM10275		
		1/2" NPTF	FM10276	FM10277	FM10278	FM10279	FM10280	FM10281	FM10282	FM10283	FM10284	FM10285	FM10286		
		G 1/2	FM10287	FM10288	FM10289	FM10290	FM10291	FM10292	FM10293	FM10294	FM10295	FM10296	FM10297		
32 mm KEYED		Manifold	FM10298	FM10299	FM10300	FM10301	FM10302	FM10303	FM10304	FM10305	FM10306	FM10307	FM10308		
		7/8" -14	FM10309	FM10310	FM10311	FM10312	FM10313	FM10314	FM10315	FM10316	FM10317	FM10318	FM10319		
		1/2" NPTF	FM10320	FM10321	FM10322	FM10323	FM10324	FM10325	FM10326	FM10327	FM10328	FM10329	FM10330		
4 BOLT MAGNETO MOUNT		1" KEYED	G 1/2	FM10331	FM10332	FM10333	FM10334	FM10335	FM10336	FM10337	FM10338	FM10339	FM10340	FM10341	
			Manifold	FM10342	FM10343	FM10344	FM10345	FM10346	FM10347	FM10348	FM10349	FM10350	FM10351	FM10352	
			7/8" -14	FM10353	FM10354	FM10355	FM10356	FM10357	FM10358	FM10359	FM10360	FM10361	FM10362	FM10363	
		1" SAE 6B SPLINED	1/2" NPTF	FM10364	FM10365	FM10366	FM10367	FM10368	FM10369	FM10370	FM10371	FM10372	FM10373	FM10374	
			G 1/2	FM10375	FM10376	FM10377	FM10378	FM10379	FM10380	FM10381	FM10382	FM10383	FM10384	FM10385	
			Manifold	FM10386	FM10387	FM10388	FM10389	FM10390	FM10391	FM10392	FM10393	FM10394	FM10395	FM10396	
		7/8"-13T SPLINED	7/8" -14	FM10397	FM10398	FM10399	FM10400	FM10401	FM10402	FM10403	FM10404	FM10405	FM10406	FM10407	
			1/2" NPTF	FM10408	FM10409	FM10410	FM10411	FM10412	FM10413	FM10414	FM10415	FM10416	FM10417	FM10418	
			G 1/2	FM10419	FM10420	FM10421	FM10422	FM10423	FM10424	FM10425	FM10426	FM10427	FM10428	FM10429	
	25 mm KEYED	Manifold	FM10430	FM10431	FM10432	FM10433	FM10434	FM10435	FM10436	FM10437	FM10438	FM10439	FM10440		
		7/8" -14	FM10682	FM10441	FM10442	FM10443	FM10444	FM10445	FM10446	FM10447	FM10448	FM10449	FM10450		
		1/2" NPTF	FM10451	FM10452	FM10453	FM10454	FM10455	FM10456	FM10457	FM10458	FM10459	FM10460	FM10461		
	1" KEYED	G 1/2	FM10462	FM10463	FM10464	FM10465	FM10466	FM10467	FM10468	FM10469	FM10470	FM10471	FM10472		
		Manifold	FM10473	FM10474	FM10475	FM10476	FM10477	FM10478	FM10479	FM10480	FM10481	FM10482	FM10483		
		7/8" -14	FM10484	FM10485	FM10486	FM10487	FM10488	FM10489	FM10490	FM10491	FM10492	FM10493	FM10494		
	1" SAE 6B SPLINED	1/2" NPTF	FM10495	FM10496	FM10497	FM10498	FM10499	FM10500	FM10501	FM10502	FM10503	FM10504	FM10505		
		G 1/2	FM10506	FM10507	FM10508	FM10509	FM10510	FM10511	FM10512	FM10513	FM10514	FM10515	FM10516		
		Manifold	FM10517	FM10518	FM10519	FM10520	FM10521	FM10522	FM10523	FM10524	FM10525	FM10526	FM10527		
	7/8"-13T SPLINED	7/8" -14	FM10528	FM10529	FM10530	FM10531	FM10532	FM10533	FM10534	FM10535	FM10536	FM10537	FM10538		
		1/2" NPTF	FM10539	FM10540	FM10541	FM10542	FM10543	FM10544	FM10545	FM10546	FM10547	FM10548	FM10549		
		G 1/2	FM10550	FM10551	FM10552	FM10553	FM10554	FM10555	FM10556	FM10557	FM10558	FM10559	FM10560		
	25 mm KEYED	Manifold	FM10561	FM10562	FM10563	FM10564	FM10565	FM10566	FM10567	FM10568	FM10569	FM10570	FM10571		
		7/8" -14	FM10572	FM10573	FM10574	FM10575	FM10576	FM10577	FM10578	FM10579	FM10580	FM10581	FM10582		
		1/2" NPTF	FM10583	FM10584	FM10585	FM10586	FM10587	FM10588	FM10589	FM10590	FM10591	FM10592	FM10593		
32 mm KEYED	G 1/2	FM10594	FM10595	FM10596	FM10597	FM10598	FM10599	FM10600	FM10601	FM10602	FM10603	FM10604			
	Manifold	FM10605	FM10606	FM10607	FM10608	FM10609	FM10610	FM10611	FM10612	FM10613	FM10614	FM10615			
	7/8" -14	FM10616	FM10617	FM10618	FM10619	FM10620	FM10621	FM10622	FM10623	FM10624	FM10625	FM10626			
SAE A 2-BOLT MOUNT Rotated	1" KEYED	7/8" -14	FM10627	FM10628	FM10629	FM10630	FM10631	FM10632	FM10633	FM10634	FM10635	FM10636	FM10637		
		1/2" NPTF	FM10638	FM10639	FM10640	FM10641	FM10642	FM10643	FM10644	FM10645	FM10646	FM10647	FM10648		
			Manifold	FM10649	FM10650	FM10651	FM10652	FM10653	FM10654	FM10655	FM10656	FM10657	FM10658	FM10659	
				7/8" -14	FM10660	FM10661	FM10662	FM10663	FM10664	FM10665	FM10666	FM10667	FM10668	FM10669	FM10670
				1/2" NPTF	FM10671	FM10672	FM10673	FM10674	FM10675	FM10676	FM10677	FM10678	FM10679	FM10680	FM10681

Additional mounts and porting available.

Visit our website [www.FluidDyneFP.com](http://www.FluidDyneFP.com) for additional information or contact customer service with your requirements.



# Fluidyne 103 - S Series

**S SERIES**

## Fluidyne 103 S Series 010 Design

Fluidyne			DISPLACEMENT cc/r (in <sup>3</sup> /r)								
			50 cc (3.0)	80 cc (4.9)	100 cc (6.1)	125 cc (7.6)	160 cc (9.6)	200 cc (12.2)	250 cc (15.4)	315 cc (19.2)	370 cc (22.6)
Char-Lynn Reference			59 cc (3.6)	74 cc (4.5)	97 cc (5.9)	120 cc (7.3)	159 cc (9.7)	185 cc (11.3)	231 cc (14.1)	293 cc (17.9)	370 cc (22.6)
MOUNTING	SHAFTS	PORTS									
2 BOLT FLANGE MOUNT	1" WOODRUFF KEYED	7/8"-14 O-RING	WF1031537	WF1031034	WF1031035	WF1031538	WF1031036	WF1031037	WF1031038	WF1031039	WF1031040
		1/2" NPT	WF1031540	WF1031026	WF1031027	WF1031541	WF1031028	WF1031029	WF1031030	WF1031031	WF1031032
		MANIFOLD	WF1031543	WF1031042	WF1031043	WF1031544	WF1031044	WF1031045	WF1031046	WF1031047	WF1031048
	1" SAE 6B SPLINED	7/8"-14 O-RING	WF1031552	WF1031082	WF1031083	WF1031553	WF1031084	WF1031085	WF1031086	WF1031087	WF1031088
		1/2" NPT	WF1031555	WF1031074	WF1031075	WF1031556	WF1031076	WF1031077	WF1031078	WF1031079	WF1031080
		MANIFOLD	WF1031558	WF1031090	WF1031091	WF1031559	WF1031092	WF1031093	WF1031094	WF1031095	WF1031096
	7/8" -13T SPLINED SAE-B (0.875")	7/8"-14 O-RING	WF1033191	WF1033048	WF1033084	WF1033031	WF1033092	WF1032945	WF1035018	WF1033306	WF1031613
		1/2" NPT	WF1033161	WF1033044	—	—	WF1033162	—	—	WF1032932	WF1033218
	4 BOLT FLANGE MOUNT	1" WOODRUFF KEYED	7/8"-14 O-RING	WF1031570	WF1031010	WF1031011	WF1031571	WF1031012	WF1031013	WF1031014	WF1031015
1/2" NPT			WF1031573	WF1031002	WF1031003	WF1031574	WF1031004	WF1031005	WF1031006	WF1031007	WF1031008
MANIFOLD			WF1031576	WF1031018	WF1031019	WF1031577	WF1031020	WF1031021	WF1031022	WF1031023	WF1031024
1" SAE 6B SPLINED		7/8"-14 O-RING	WF1031579	WF1031058	WF1031059	WF1031580	WF1031060	WF1031061	WF1031062	WF1031063	WF1031064
		1/2" NPT	WF1031582	WF1031050	WF1031051	WF1031583	WF1031052	WF1031053	WF1031054	WF1031055	WF1031056
		MANIFOLD	WF1031585	WF1031066	WF1031067	WF1031586	WF1031068	WF1031069	WF1031070	WF1031071	WF1031072
4 BOLT MAGNETO MOUNT	1" WOODRUFF KEYED	7/8"-14 O-RING	WF1035003	WF1032725	WF1033195	WF1033196	WF1033197	WF1031665	WF1033198	WF1033199	—
	1" SAE 6B SPLINED	7/8"-14 O-RING	—	—	WF1032711	—	WF1033176	WF1032750	WF1031652	WF1031653	—
MAX TORQUE (IN-LBS)	CONTINUOUS		844	1,680	2,123	2,582	3,210	3,166	3,113	3,184	3,714
	INTERMITTENT		1,114	1,946	2,476	3,007	3,803	3,962	4,157	4,157	4,847
MAX PRESSURE (PSI)	CONTINUOUS		2,031	2,539	2,539	2,539	2,394	1,886	1,596	1,233	1,2
	INTERMITTENT		2,539	2,901	2,901	2,901	2,901	2,539	2,031	1,668	1,668
MAX FLOW (GPM)	CONTINUOUS		11	16	16	16	16	16	16	16	16
	INTERMITTENT		13	20	20	20	20	20	20	20	2
MAX RPM	CONTINUOUS		755	750	600	475	375	300	240	190	160
	INTERMITTENT		970	940	750	600	470	375	300	240	200
WEIGHT (LBS)			15	15	15	16	17	18	19	20	21

Additional mounts and porting available.

Visit our website [www.FluidyneFP.com](http://www.FluidyneFP.com) for additional information or contact customer service with your requirements.



sales@FluidyneFP.com • [www.FluidyneFP.com](http://www.FluidyneFP.com)



# FluidDyne FM3 Series

**FM3 SERIES**

## FluidDyne FM3 Series

ALL MOTORS IN THIS CHART HAVE BLACK PAINT, CORRESPONDING CASE DRAIN AND BUNA SEALS

MOUNTING	SHAFT	PORTS	DISPLACEMENT cc (in <sup>3</sup> )										
			50 cc (3.15)	63 cc (3.84)	80 cc (4.74)	100 cc (6.1)	125 cc (7.7)	160 cc (9.7)	200 cc (12.2)	250 cc (15.3)	315 cc (19.2)	400 cc (24.4)	500 cc (30.5)
SAE A-2-BOLT MOUNT	1" KEYED	7/8" -14	FM30001	FM30002	FM30003	FM30004	FM30005	FM30006	FM30007	FM30008	FM30009	FM30010	FM30011
		1/2" NPTF	FM30012	FM30013	FM30014	FM30015	FM30016	FM30017	FM30018	FM30019	FM30020	FM30021	FM30022
		G 1/2	FM30023	FM30024	FM30025	FM30026	FM30027	FM30028	FM30029	FM30030	FM30031	FM30032	FM30033
		Manifold	FM30034	FM30035	FM30036	FM30037	FM30038	FM30039	FM30040	FM30041	FM30042	FM30043	FM30044
		7/8" -14	FM30045	FM30046	FM30047	FM30048	FM30049	FM30050	FM30051	FM30052	FM30053	FM30054	FM30055
		1/2" NPTF	FM30056	FM30057	FM30058	FM30059	FM30060	FM30061	FM30062	FM30063	FM30064	FM30065	FM30066
	1" SAE 6B SPLINED	G 1/2	FM30067	FM30068	FM30069	FM30070	FM30071	FM30072	FM30073	FM30074	FM30075	FM30076	FM30077
		Manifold	FM30078	FM30079	FM30080	FM30081	FM30082	FM30083	FM30084	FM30085	FM30086	FM30087	FM30088
		7/8" -14	FM30089	FM30090	FM30091	FM30092	FM30093	FM30094	FM30095	FM30096	FM30097	FM30098	FM30099
		1/2" NPTF	FM30100	FM30101	FM30102	FM30103	FM30104	FM30105	FM30106	FM30107	FM30108	FM30109	FM30110
		G 1/2	FM30111	FM30112	FM30113	FM30114	FM30115	FM30116	FM30117	FM30118	FM30119	FM30120	FM30121
		Manifold	FM30122	FM30123	FM30124	FM30125	FM30126	FM30127	FM30128	FM30129	FM30130	FM30131	FM30132
	25 mm KEYED	7/8" -14	FM30133	FM30134	FM30135	FM30136	FM30137	FM30138	FM30139	FM30140	FM30141	FM30142	FM30143
		1/2" NPTF	FM30144	FM30145	FM30146	FM30147	FM30148	FM30149	FM30150	FM30151	FM30152	FM30153	FM30154
		G 1/2	FM30155	FM30156	FM30157	FM30158	FM30159	FM30160	FM30161	FM30162	FM30163	FM30164	FM30165
		Manifold	FM30166	FM30167	FM30168	FM30169	FM30170	FM30171	FM30172	FM30173	FM30174	FM30175	FM30176
		7/8" -14	FM30177	FM30178	FM30179	FM30180	FM30181	FM30182	FM30183	FM30184	FM30185	FM30186	FM30187
		1/2" NPTF	FM30188	FM30189	FM30190	FM30191	FM30192	FM30193	FM30194	FM30195	FM30196	FM30197	FM30198
	32 mm KEYED	G 1/2	FM30199	FM30200	FM30201	FM30202	FM30203	FM30204	FM30205	FM30206	FM30207	FM30208	FM30209
		Manifold	FM30210	FM30211	FM30212	FM30213	FM30214	FM30215	FM30216	FM30217	FM30218	FM30219	FM30220
		7/8" -14	FM30221	FM30222	FM30223	FM30224	FM30225	FM30226	FM30227	FM30228	FM30229	FM30230	FM30231
		1/2" NPTF	FM30232	FM30233	FM30234	FM30235	FM30236	FM30237	FM30238	FM30239	FM30240	FM30241	FM30242
		G 1/2	FM30243	FM30244	FM30245	FM30246	FM30247	FM30248	FM30249	FM30250	FM30251	FM30252	FM30253
		Manifold	FM30254	FM30255	FM30256	FM30257	FM30258	FM30259	FM30260	FM30261	FM30262	FM30263	FM30264
4 BOLT SQUARE MOUNT	1" KEYED	7/8" -14	FM30265	FM30266	FM30267	FM30268	FM30269	FM30270	FM30271	FM30272	FM30273	FM30274	FM30275
		1/2" NPTF	FM30276	FM30277	FM30278	FM30279	FM30280	FM30281	FM30282	FM30283	FM30284	FM30285	FM30286
		G 1/2	FM30287	FM30288	FM30289	FM30290	FM30291	FM30292	FM30293	FM30294	FM30295	FM30296	FM30297
		Manifold	FM30298	FM30299	FM30300	FM30301	FM30302	FM30303	FM30304	FM30305	FM30306	FM30307	FM30308
		7/8" -14	FM30309	FM30310	FM30311	FM30312	FM30313	FM30314	FM30315	FM30316	FM30317	FM30318	FM30319
		1/2" NPTF	FM30320	FM30321	FM30322	FM30323	FM30324	FM30325	FM30326	FM30327	FM30328	FM30329	FM30330
	1" SAE 6B SPLINED	G 1/2	FM30331	FM30332	FM30333	FM30334	FM30335	FM30336	FM30337	FM30338	FM30339	FM30340	FM30341
		Manifold	FM30342	FM30343	FM30344	FM30345	FM30346	FM30347	FM30348	FM30349	FM30350	FM30351	FM30352
		7/8" -14	FM30353	FM30354	FM30355	FM30356	FM30357	FM30358	FM30359	FM30360	FM30361	FM30362	FM30363
		1/2" NPTF	FM30364	FM30365	FM30366	FM30367	FM30368	FM30369	FM30370	FM30371	FM30372	FM30373	FM30374
		G 1/2	FM30375	FM30376	FM30377	FM30378	FM30379	FM30380	FM30381	FM30382	FM30383	FM30384	FM30385
		Manifold	FM30386	FM30387	FM30388	FM30389	FM30390	FM30391	FM30392	FM30393	FM30394	FM30395	FM30396
	25 mm KEYED	7/8" -14	FM30397	FM30398	FM30399	FM30400	FM30401	FM30402	FM30403	FM30404	FM30405	FM30406	FM30407
		1/2" NPTF	FM30408	FM30409	FM30410	FM30411	FM30412	FM30413	FM30414	FM30415	FM30416	FM30417	FM30418
		G 1/2	FM30419	FM30420	FM30421	FM30422	FM30423	FM30424	FM30425	FM30426	FM30427	FM30428	FM30429
		Manifold	FM30430	FM30431	FM30432	FM30433	FM30434	FM30435	FM30436	FM30437	FM30438	FM30439	FM30440
		29	FM30441	FM30442	FM30443	FM30444	FM30445	FM30446	FM30447	FM30448	FM30449	FM30450	FM30451
		1/2" NPTF	FM30452	FM30453	FM30454	FM30455	FM30456	FM30457	FM30458	FM30459	FM30460	FM30461	FM30462
	1" SAE 6B SPLINED	G 1/2	FM30463	FM30464	FM30465	FM30466	FM30467	FM30468	FM30469	FM30470	FM30471	FM30472	FM30473
		Manifold	FM30474	FM30475	FM30476	FM30477	FM30478	FM30479	FM30480	FM30481	FM30482	FM30483	FM30484
		7/8" -14	FM30485	FM30486	FM30487	FM30488	FM30489	FM30490	FM30491	FM30492	FM30493	FM30494	FM30495
		1/2" NPTF	FM30496	FM30497	FM30498	FM30499	FM30500	FM30501	FM30502	FM30503	FM30504	FM30505	FM30506
		G 1/2	FM30507	FM30508	FM30509	FM30510	FM30511	FM30512	FM30513	FM30514	FM30515	FM30516	FM30517
		Manifold	FM30518	FM30519	FM30520	FM30521	FM30522	FM30523	FM30524	FM30525	FM30526	FM30527	FM30528
7/8" -13T SPLINED	7/8" -14	FM30529	FM30530	FM30531	FM30532	FM30533	FM30534	FM30535	FM30536	FM30537	FM30538	FM30539	
	1/2" NPTF	FM30540	FM30541	FM30542	FM30543	FM30544	FM30545	FM30546	FM30547	FM30548	FM30549	FM30550	
	G 1/2	FM30551	FM30552	FM30553	FM30554	FM30555	FM30556	FM30557	FM30558	FM30559	FM30560	FM30561	
	Manifold	FM30562	FM30563	FM30564	FM30565	FM30566	FM30567	FM30568	FM30569	FM30570	FM30571	FM30572	
	7/8" -14	FM30573	FM30574	FM30575	FM30576	FM30577	FM30578	FM30579	FM30580	FM30581	FM30582	FM30583	
	1/2" NPTF	FM30584	FM30585	FM30586	FM30587	FM30588	FM30589	FM30590	FM30591	FM30592	FM30593	FM30594	
25 mm KEYED	G 1/2	FM30595	FM30596	FM30597	FM30598	FM30599	FM30600	FM30601	FM30602	FM30603	FM30604	FM30605	
	Manifold	FM30606	FM30607	FM30608	FM30609	FM30610	FM30611	FM30612	FM30613	FM30614	FM30615	FM30616	
	7/8" -14	FM30617	FM30618	FM30619	FM30620	FM30621	FM30622	FM30623	FM30624	FM30625	FM30626	FM30627	
	1/2" NPTF	FM30628	FM30629	FM30630	FM30631	FM30632	FM30633	FM30634	FM30635	FM30636	FM30637	FM30638	
	G 1/2	FM30639	FM30640	FM30641	FM30642	FM30643	FM30644	FM30645	FM30646	FM30647	FM30648	FM30649	
	Manifold	FM30650	FM30651	FM30652	FM30653	FM30654	FM30655	FM30656	FM30657	FM30658	FM30659	FM30660	

Additional mounts and porting available.

Visit our website [www.FluidDyneFP.com](http://www.FluidDyneFP.com) for additional information or contact customer service with your requirements.



[sales@FluidDyneFP.com](mailto:sales@FluidDyneFP.com) • [www.FluidDyneFP.com](http://www.FluidDyneFP.com)

# Fluidyne 500 Series

**500 SERIES**

Fluidyne 500 Series											
Description	FFP Model Code	500xxxA5120AAAAA	500xxxA5122AAAAA	500xxxA5102AAAAA	500xxxA5123AAAAA	500xxxA5110AAAAA	500xxxW3120AAAAA	500xxxW3122AAAAA	500xxxW3102AAAAA	500xxxW3123AAAAA	500xxxW3110AAAAA
		Magneto Mount					Wheel Mount				
		7/8-14 O-Ring Ports					7/8-14 O-Ring Ports				
		1.25" Keyed Shaft	1.25" Tapered Shaft	1" 6B Spline Shaft	1.25" 14-Tooth Shaft	1" Keyed Shaft	1.25" Keyed Shaft	1.25" Tapered Shaft	1" 6B Spline Shaft	1.25" 14-Tooth Shaft	1" Keyed Shaft
xxx = Size (cc/ rev)	125 (7.2)	F080000	F080060	F080010	F080015	F080055	F080027	F080038	F080087	F080049	F080052
	160 (9.5)	F080057	F080008	F080011	F080075	F080022	F080028	F080084	F080088	F080095	F080103
	200 (11.9)	F080001	F080061	F080012	F080016	F080023	F080029	F080039	F080089	F080096	F080104
	230 (13.9)	F080058	F080062	F080013	F080017	F080024	F080030	F080040	F080090	F080097	F080053
	250 (15.7)	F080059	F080063	F080069	F080076	F080079	F080031	F080041	F080046	F080050	F080105
	300 (18.1)	F080002	F080009	F080014	F080018	F080025	F080032	F080054	F080047	F080098	F080106
	350 (21.1)	F080003	F080064	F080070	F080019	F080080	F080033	F080043	F080091	F080099	F080107
	375 (22.6)	F080004	F080065	F080071	F080020	F080026	F080034	F080044	F080048	F080051	F080108
	475 (28.2)	F080005	F080066	F080072	F080077	F080081	F080035	F080045	F080092	F080100	F080109
	540 (32.9)	F080006	F080067	F080073	F080078	F080082	F080036	F080085	F080093	F080101	F080110
	750 (45.6)	F080007	F080068	F080074	F080021	F080083	F080037	F080086	F080094	F080102	F080111

Additional mounts and porting available.

Visit our website [www.FluidyneFP.com](http://www.FluidyneFP.com) for additional information or contact customer service with your requirements.



sales@FluidyneFP.com • [www.FluidyneFP.com](http://www.FluidyneFP.com)



# FluidDyne FM50 Series

**FM50 SERIES**

## FluidDyne FM50 Series

ALL MOTORS IN THIS CHART HAVE BLACK PAINT, CCW ROTATION AND BUNA SEALS

MOUNTING	SHAFT	PORTS	DISPLACEMENT cc/r (in <sup>3</sup> /r)										
			125 (7.63)	160 (9.76)	200 (12.2)	230 (14.3)	250 (15.25)	300 (18.30)	350 (21.35)	375 (22.88)	475 (28.98)	540 (32.94)	750 (45.75)
SAE A 6-BOLT MAGNETO MOUNT	1" SAE 6B SPLINED	7/8" -14 ORB	FM500001	FM500002	FM500003	FM500004	FM500005	FM500006	FM500007	FM500008	FM500009	FM500010	FM500011
		G 1/2	FM500012	FM500013	FM500014	FM500015	FM500016	FM500017	FM500018	FM500019	FM500020	FM500021	FM500022
	1" KEYED	7/8" -14 ORB	FM500023	FM500024	FM500025	FM500026	FM500027	FM500028	FM500029	FM500030	FM500031	FM500032	FM500033
		G 1/2	FM500034	FM500035	FM500036	FM500037	FM500038	FM500039	FM500040	FM500041	FM500042	FM500043	FM500044
	1-1/4" KEYED	7/8" -14 ORB	FM500045	FM500046	FM500047	FM500048	FM500049	FM500050	FM500051	FM500052	FM500053	FM500054	FM500055
		G 1/2	FM500056	FM500057	FM500058	FM500059	FM500060	FM500061	FM500062	FM500063	FM500064	FM500065	FM500066
	1-1/4" TAPERED	7/8" -14 ORB	FM500067	FM500068	FM500069	FM500070	FM500071	FM500072	FM500073	FM500074	FM500075	FM500076	FM500077
		G 1/2	FM500078	FM500079	FM500080	FM500081	FM500082	FM500083	FM500084	FM500085	FM500086	FM500087	FM500088
	1-1/4"- 14T SPLINED	7/8" -14 ORB	FM500089	FM500090	FM500091	FM500092	FM500093	FM500094	FM500095	FM500096	FM500097	FM500098	FM500099
		G 1/2	FM500100	FM500101	FM500102	FM500103	FM500104	FM500105	FM500106	FM500107	FM500108	FM500109	FM500110
	32mm KEYED	7/8" -14 ORB	FM500111	FM500112	FM500113	FM500114	FM500115	FM500116	FM500117	FM500118	FM500119	FM500120	FM500121
		G 1/2	FM500122	FM500123	FM500124	FM500125	FM500126	FM500127	FM500128	FM500129	FM500130	FM500131	FM500132
4 BOLT WHEEL MOUNT	1" SAE 6B SPLINED	7/8" -14 ORB	FM500133	FM500134	FM500135	FM500136	FM500137	FM500138	FM500139	FM500140	FM500141	FM500142	FM500143
		G 1/2	FM500144	FM500145	FM500146	FM500147	FM500148	FM500149	FM500150	FM500151	FM500152	FM500153	FM500154
	1" KEYED	7/8" -14 ORB	FM500155	FM500156	FM500157	FM500158	FM500159	FM500160	FM500161	FM500162	FM500163	FM500164	FM500165
		G 1/2	FM500166	FM500167	FM500168	FM500169	FM500170	FM500171	FM500172	FM500173	FM500174	FM500175	FM500176
	1-1/4" KEYED	7/8" -14 ORB	FM500177	FM500178	FM500179	FM500180	FM500181	FM500182	FM500183	FM500184	FM500185	FM500186	FM500187
		G 1/2	FM500188	FM500189	FM500190	FM500191	FM500192	FM500193	FM500194	FM500195	FM500196	FM500197	FM500198
	1-1/4" TAPERED	7/8" -14 ORB	FM500199	FM500200	FM500201	FM500202	FM500203	FM500204	FM500205	FM500206	FM500207	FM500208	FM500209
		G 1/2	FM500210	FM500211	FM500212	FM500213	FM500214	FM500215	FM500216	FM500217	FM500218	FM500219	FM500220
	1-1/4"- 14T SPLINED	7/8" -14 ORB	FM500221	FM500222	FM500223	FM500224	FM500225	FM500226	FM500227	FM500228	FM500229	FM500230	FM500231
		G 1/2	FM500232	FM500233	FM500234	FM500235	FM500236	FM500237	FM500238	FM500239	FM500240	FM500241	FM500242
	32mm KEYED	7/8" -14 ORB	FM500243	FM500244	FM500245	FM500246	FM500247	FM500248	FM500249	FM500250	FM500251	FM500252	FM500253
		G 1/2	FM500254	FM500255	FM500256	FM500257	FM500258	FM500259	FM500260	FM500261	FM500262	FM500263	FM500264

Additional mounts and porting available.

Visit our website [www.FluidDyneFP.com](http://www.FluidDyneFP.com) for additional information or contact customer service with your requirements.



[sales@FluidDyneFP.com](mailto:sales@FluidDyneFP.com) • [www.FluidDyneFP.com](http://www.FluidDyneFP.com)

# FluidDyne FM51 Series

**FM51 SERIES**

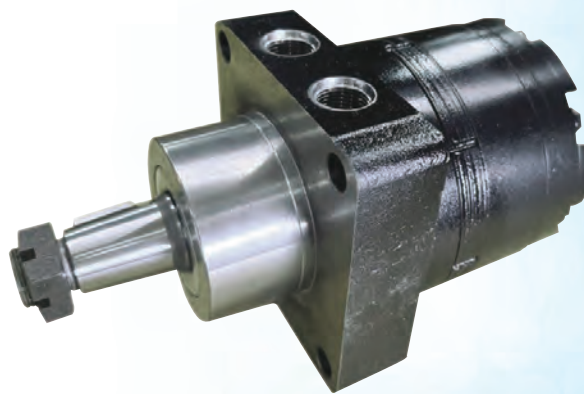
## FluidDyne FM51 Series

ALL MOTORS IN THIS CHART HAVE BLACK PAINT, CW ROTATION AND BUNA SEALS

MOUNTING	SHAFT	PORTS	DISPLACEMENT cc (in <sup>3</sup> )											
			125 (7.63)	160 (9.76)	200 (12.2)	230 (14.3)	250 (15.25)	300 (18.30)	350 (21.35)	375 (22.88)	475 (28.98)	540 (32.94)	750 (45.75)	
SAE A 6-BOLT MAGNETO MOUNT	1" SAE 6B SPLINED	7/8" -14 ORB	FM510001	FM510002	FM510003	FM510004	FM510005	FM510006	FM510007	FM510008	FM510009	FM510010	FM510011	
		G 1/2	FM510012	FM510013	FM510014	FM510015	FM510016	FM510017	FM510018	FM510019	FM510020	FM510021	FM510022	
	1" KEYED	7/8" -14 ORB	FM510023	FM510024	FM510025	FM510026	FM510027	FM510028	FM510029	FM510030	FM510031	FM510032	FM510033	
		G 1/2	FM510034	FM510035	FM510036	FM510037	FM510038	FM510039	FM510040	FM510041	FM510042	FM510043	FM510044	
	1-1/4" KEYED	7/8" -14 ORB	FM510045	FM510046	FM510047	FM510048	FM510049	FM510050	FM510051	FM510052	FM510053	FM510054	FM510055	
		G 1/2	FM510056	FM510057	FM510058	FM510059	FM510060	FM510061	FM510062	FM510063	FM510064	FM510065	FM510066	
	1-1/4" TAPERED	7/8" -14 ORB	FM510067	FM510068	FM510069	FM510070	FM510071	FM510072	FM510073	FM510074	FM510075	FM510076	FM510077	
		G 1/2	FM510078	FM510079	FM510080	FM510081	FM510082	FM510083	FM510084	FM510085	FM510086	FM510087	FM510088	
	1-1/4" -14T SPLINED	7/8" -14 ORB	FM510089	FM510090	FM510091	FM510092	FM510093	FM510094	FM510095	FM510096	FM510097	FM510098	FM510099	
		G 1/2	FM510100	FM510101	FM510102	FM510103	FM510104	FM510105	FM510106	FM510107	FM510108	FM510109	FM510110	
	32mm KEYED	7/8" -14 ORB	FM510111	FM510112	FM510113	FM510114	FM510115	FM510116	FM510117	FM510118	FM510119	FM510120	FM510121	
		G 1/2	FM510122	FM510123	FM510124	FM510125	FM510126	FM510127	FM510128	FM510129	FM510130	FM510131	FM510132	
	4 BOLT WHEEL MOUNT	1" SAE 6B SPLINED	7/8" -14 ORB	FM510133	FM510134	FM510135	FM510136	FM510137	FM510138	FM510139	FM510140	FM510141	FM510142	FM510143
			G 1/2	FM510144	FM510145	FM510146	FM510147	FM510148	FM510149	FM510150	FM510151	FM510152	FM510153	FM510154
1" KEYED		7/8" -14 ORB	FM510155	FM510156	FM510157	FM510158	FM510159	FM510160	FM510161	FM510162	FM510163	FM510164	FM510165	
		G 1/2	FM510166	FM510167	FM510168	FM510169	FM510170	FM510171	FM510172	FM510173	FM510174	FM510175	FM510176	
1-1/4" KEYED		7/8" -14 ORB	FM510177	FM510178	FM510179	FM510180	FM510181	FM510182	FM510183	FM510184	FM510185	FM510186	FM510187	
		G 1/2	FM510188	FM510189	FM510190	FM510191	FM510192	FM510193	FM510194	FM510195	FM510196	FM510197	FM510198	
1-1/4" TAPERED		7/8" -14 ORB	FM510199	FM510200	FM510201	FM510202	FM510203	FM510204	FM510205	FM510206	FM510207	FM510208	FM510209	
		G 1/2	FM510210	FM510211	FM510212	FM510213	FM510214	FM510215	FM510216	FM510217	FM510218	FM510219	FM510220	
1-1/4" -14T SPLINED		7/8" -14 ORB	FM510221	FM510222	FM510223	FM510224	FM510225	FM510226	FM510227	FM510228	FM510229	FM510230	FM510231	
		G 1/2	FM510232	FM510233	FM510234	FM510235	FM510236	FM510237	FM510238	FM510239	FM510240	FM510241	FM510242	
32mm KEYED		7/8" -14 ORB	FM510243	FM510244	FM510245	FM510246	FM510247	FM510248	FM510249	FM510250	FM510251	FM510252	FM510253	
		G 1/2	FM510254	FM510255	FM510256	FM510257	FM510258	FM510259	FM510260	FM510261	FM510262	FM510263	FM510264	

Additional mounts and porting available.

Visit our website [www.FluidDyneFP.com](http://www.FluidDyneFP.com) for additional information or contact customer service with your requirements.



[sales@FluidDyneFP.com](mailto:sales@FluidDyneFP.com) • [www.FluidDyneFP.com](http://www.FluidDyneFP.com)

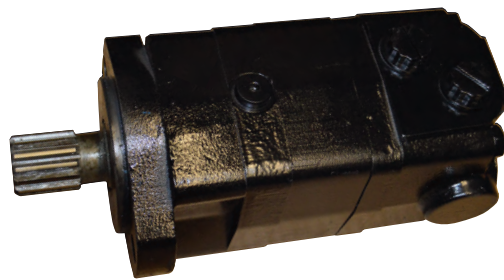
# FluidDyne 104 - 2000 Series

**2000 SERIES**

FluidDyne			DISPLACEMENT cc/r (in <sup>3</sup> /r)							
MOUNTING	SHAFTS	Char-Lynn Reference	80 cc	100 cc	125 cc	160 cc	200 cc	250 cc	315 cc	375 cc
			(4.9)	(6.2)	(7.2)	(9.6)	(12.2)	(15.3)	(19.2)	(22.6)
PORTS			80 cc	100 cc	130 cc	160 cc	195 cc	245 cc	305 cc	394 cc
			(4.9)	(6.2)	(8.0)	(9.6)	(11.9)	(14.9)	(18.7)	(24.0)
2-BOLT SAE "A" FLANGE MOUNT	1" KEYED	7/8"-14 O-RING	WF1041001	WF1041002	WF1041003	WF1041004	WF1041005	WF1041006	WF1041007	WF1041143
		1-1/16"-12 O-RING 180° APART	WF1041037	WF1041038	WF1041039	WF1041040	WF1041041	WF1041042	WF1041043	WF1041044
		MANIFOLD 3x 3/8"-16	WF1041394	WF1041751	WF1041070	WF1041416	WF1041524	WF1043078	WF1041593	WF1041577
	1-1/4" KEYED	7/8"-14 O-RING	WF1041022	WF1041023	WF1041024	WF1041025	WF1041026	WF1041027	WF1041028	WF1041228
		1-1/16"-12 O-RING 180° APART	WF1041061	WF1041062	WF1041063	WF1041064	WF1041065	WF1041066	WF1041067	WF1041068
		MANIFOLD 3x 3/8"-16	WF1041144	WF1041145	WF1041146	WF1041147	WF1041148	WF1041149	WF1041150	WF1041151
	1-1/4" 14T SPLINED	7/8"-14 O-RING	WF1041029	WF1041030	WF1041031	WF1041032	WF1041033	WF1041034	WF1041035	WF1041229
		1-1/16"-12 O-RING 180° APART	WF1041087	WF1041088	WF1041089	WF1041090	WF1041091	WF1041092	WF1041093	WF1041094
		MANIFOLD 3x 3/8"-16	WF1041079	WF1041080	WF1041081	WF1041082	WF1041083	WF1041084	WF1041085	WF1041431
	1" SAE 6B SPLINE	7/8" -14 O-RING	WF1041015	WF1041016	WF1041017	WF1041018	WF1041019	WF1041020	WF1041021	WF1041227
		1-1/16"-12 O-RING 180° APART	WF1041053	WF1041054	WF1041055	WF1041056	WF1041057	WF1041058	WF1041059	WF1041060
	1-1/4" TAPERED	7/8" -14 O-RING	WF1041008	WF1041009	WF1041010	WF1041011	WF1041012	WF1041013	WF1041014	WF1041226
4-BOLT SQUARE FLANGE	1-1/4" KEYED	7/8"-14 O-RING	WF1041246	WF1041247	WF1041248	WF1041249	WF1041250	WF1041251	WF1041252	WF1041253
	1-1/4" 14T SPLINED		WF1041254	WF1041255	WF1041256	WF1041257	WF1041258	WF1041259	WF1041260	WF1041261
	32MM KEYED	G 1/2 (BSP)	WF1041376	WF1041377	WF1041378	WF1041379	WF1041380	WF1041381	WF1041382	WF1041383
2-BOLT SAE "B" MOUNT	1" SAE 6B SPLINE	7/8" O-RING	WF1041193	WF1041194	WF1041195	WF1041196	WF1041197	WF1041198	WF1041199	WF1041797
	7/8" 13T		WF1041216	WF1041217	WF1041218	WF1041219	WF1041220	WF1041455	WF1043205	—
4-BOLT MAGNETO MOUNT	1-1/4" KEYED	7/8" O-RING	WF1041855	WF1041343	WF1043453	WF1041626	WF1041346	WF1041627	WF1041401	WF1041445
	1-1/4" 14T SPLINED		WF1041700	WF1041883	WF1041374	WF1041701	WF1041415	WF1041491	WF1041406	WF1041769
	1" SAE 6B SPLINE		WF1041744	WF1041791	WF1043272	—	WF1041561	WF1041451	WF1041982	—
4-BOLT WHEEL	1-1/4" TAPERED	7/8" O-RING	WF1051001	WF1051002	WF1051003	WF1051004	WF1051005	WF1051006	WF1051007	WF1051060
BEARINGLESS		7/8" O-RING	WF1061008	WF1061009	WF1061010	WF1061011	WF1061012	WF1061013	WF1061014	WF1061015
MAX TORQUE (IN-LBS)	CONTINUOUS		1,990	2,565	3,228	4,292	5,185	6,262	7,783	7,783
	INTERMITTENT		2,211	2,830	3,538	4,776	5,704	7,128	8,490	8,490
MAX PRESSURE (PSI)	CONTINUOUS		2,576	2,576	2,576	3,045	3,045	2,900	2,900	2,320
	INTERMITTENT		3,091	3,091	2,576	3,265	3,265	3,265	3,265	2,563
MAX FLOW (GPM)	CONTINUOUS		18	20	20	20	20	20	20	20
	INTERMITTENT		21	24	24	24	24	24	24	24
MAX RPM	CONTINUOUS		800	748	600	470	375	300	240	185
	INTERMITTENT		990	900	720	560	450	360	280	225
WEIGHT (LBS)			22	22	23	24	24	26	27	29

Additional mounts and porting available.

Visit our website [www.FluidDyneFP.com](http://www.FluidDyneFP.com) for additional information or contact customer service with your requirements.



[sales@FluidDyneFP.com](mailto:sales@FluidDyneFP.com) • [www.FluidDyneFP.com](http://www.FluidDyneFP.com)



# Fluidyne 104Y - 2000 Series

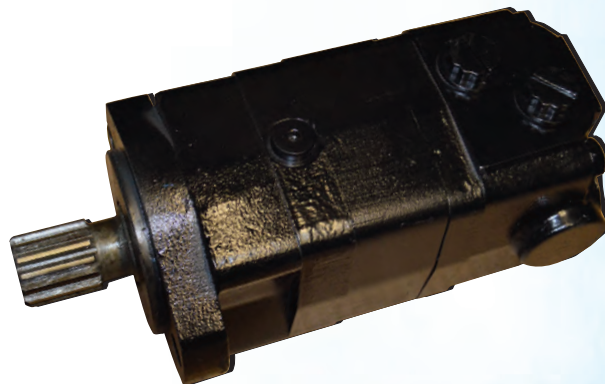
**2000 SERIES**

## Fluidyne 104Y - 2000 Series

Fluidyne			DISPLACEMENT cc/r (in <sup>3</sup> /r)								
			80 cc (4.9)	100 cc (6.2)	125 cc (7.6)	160 cc (9.6)	200 cc (12.2)	250 cc (15.3)	315 cc (19.2)	400 cc (24.4)	475 cc (29.0)
MOUNTING	SHAFTS	Char-Lynn Reference	80 cc (4.9)	100 cc (6.2)	130 cc (8.0)	160 cc (9.6)	195 cc (11.9)	245 cc (14.9)	305 cc (18.7)	394 cc (24.0)	490 cc (29.8)
		PORTS									
2-BOLT SAE "A" FLANGE MOUNT	1" KEYED	7/8"-14 O-RING	WF1041001Y	WF1041002Y	WF1041003Y	WF1041004Y	WF1041005Y	WF1041006Y	WF1041007Y	WF1041143Y	—
		1-1/16"-12 O-RING 180° APART	WF1041037Y	WF1041038Y	WF1041039Y	WF1041040Y	WF1041041Y	WF1041042Y	WF1041043Y	WF1041044Y	—
	1-1/4" KEYED	7/8"-14 O-RING	WF1041022Y	WF1041023Y	WF1041024Y	WF1041025Y	WF1041026Y	WF1041027Y	WF1041028Y	WF1041228Y	WF1041420Y
		1-1/16"-12 O-RING 180° APART	WF1041061Y	WF1041062Y	WF1041063Y	WF1041064Y	WF1041065Y	WF1041066Y	WF1041067Y	WF1041068Y	WF1041421Y
	1-1/4" 14T SPLINED	7/8"-14 O-RING	WF1041029Y	WF1041030Y	WF1041031Y	WF1041032Y	WF1041033Y	WF1041034Y	WF1041035Y	WF1041229Y	WF1041422Y
		1-1/16"-12 O-RING 180° APART	WF1041087Y	WF1041088Y	WF1041089Y	WF1041090Y	WF1041091Y	WF1041092Y	WF1041093Y	WF1041094Y	WF1041423Y
	1" SAE 6B SPLINE	7/8"-14 O-RING	WF1041015Y	WF1041016Y	WF1041017Y	WF1041018Y	WF1041019Y	WF1041020Y	WF1041021Y	WF1041227Y	WF1041432Y
		1-1/16"-12 O-RING 180° APART	WF1041053Y	WF1041054Y	WF1041055Y	WF1041056Y	WF1041057Y	WF1041058Y	WF1041059Y	WF1041060Y	—
	1-1/4" TAPERED	7/8"-14 O-RING	WF1041008Y	WF1041009Y	WF1041010Y	WF1041011Y	WF1041012Y	WF1041013Y	WF1041014Y	WF1041226Y	—
	4-BOLT SQUARE FLANGE	1-1/4" KEYED	7/8"-14 O-RING	WF1041246Y	WF1041247Y	WF1041248Y	WF1041249Y	WF1041250Y	WF1041251Y	WF1041252Y	WF1041253Y
1-1/4" 14T SPLINED		WF1041254Y		WF1041255Y	WF1041256Y	WF1041257Y	WF1041258Y	WF1041259Y	WF1041260Y	WF1041261Y	WF1043523Y
32MM KEYED		G 1/2 (BSP)	WF1041376Y	WF1041377Y	WF1041378Y	WF1041379Y	WF1041380Y	WF1041381Y	WF1041382Y	WF1041383Y	WF1041660Y
			WF1041384Y	WF1041385Y	WF1041386Y	WF1041387Y	WF1041388Y	WF1041389Y	WF1041390Y	WF1041391Y	WF1041564Y
2-BOLT SAE "B" MOUNT	1" SAE 6B SPLINE	7/8" O-RING	WF1041193Y	WF1041194Y	WF1041195Y	WF1041196Y	WF1041197Y	WF1041198Y	WF1041199Y	WF1041797Y	WF1043670Y
	7/8" 13T		WF1041216Y	WF1041217Y	WF1041218Y	WF1041219Y	WF1041220Y	WF1041455Y	WF1043205Y	—	WF1043052Y
4-BOLT MAGNETO MOUNT	1-1/4" KEYED	7/8" O-RING	WF1041855Y	WF1041343Y	WF1043453Y	WF1041626Y	WF1041346Y	WF1041627Y	WF1041401Y	WF1041445Y	WF1041397Y
	1-1/4" 14T SPLINED		WF1041700Y	WF1041883Y	WF1041374Y	WF1041701Y	WF1041415Y	WF1041491Y	WF1041406Y	WF1041769Y	WF1041591Y
	1" SAE 6B SPLINE		WF1041744Y	WF1041791Y	WF1043272Y	WF1045005Y	WF1041561Y	WF1041451Y	WF1041982Y	WF1045002Y	WF1041442Y
MAX TORQUE (FT-LBS)	CONTINUOUS	140	177	229	358	432	522	649	649	671	
MAX DIFF PRESSURE (PSI)	CONTINUOUS	2,576	2,576	2,576	3,045	3,045	2,900	2,900	2,320	2,030	
MAX FLOW (GPM)	CONTINUOUS	18	20	20	20	20	20	20	20	20	
MAX RPM	CONTINUOUS	800	748	600	470	375	300	240	185	155	
	WEIGHT (LBS)	22	22	23	24	24	26	27	29	32	

Additional mounts and porting available.

Visit our website [www.FluidyneFP.com](http://www.FluidyneFP.com) for additional information or contact customer service with your requirements.



sales@FluidyneFP.com • [www.FluidyneFP.com](http://www.FluidyneFP.com)

# FluiDyne FM4 Series

## FM4 SERIES

### FluiDyne FM4 Series

ALL MOTORS IN THIS CHART HAVE BLACK PAINT, CORESPONDING CASE DRAIN AND BUNA SEALS

MOUNTING	SHAFT	PORTS	DISPLACEMENT cc (in <sup>3</sup> )										
			80 cc (4.88)	100 cc (6.1)	125 cc (7.63)	160 cc (9.76)	200 cc (12.2)	250 cc (15.25)	280 cc (17.1)	305 cc (18.6)	400 cc (24.4)	500 cc (30.5)	
SAE A 2-BOLT MOUNT	1" KEYED	7/8" -14	FM40001	FM40002	FM40003	FM40004	FM40005	FM40006	FM40007	FM40008	FM40009	FM40010	
		1/2" NPTF	FM40011	FM40012	FM40013	FM40014	FM40015	FM40016	FM40017	FM40018	FM40019	FM40020	
		G 1/2	FM40021	FM40022	FM40023	FM40024	FM40025	FM40026	FM40027	FM40028	FM40029	FM40030	
		D2 Manifold	FM40031	FM40032	FM40033	FM40034	FM40035	FM40036	FM40037	FM40038	FM40039	FM40040	
		C3 Manifold	FM40041	FM40042	FM40043	FM40044	FM40045	FM40046	FM40047	FM40048	FM40049	FM40050	
		7/8" -14	FM40051	FM40052	FM40053	FM40054	FM40055	FM40056	FM40057	FM40058	FM40059	FM40060	
	1" SAE 6B SPLINED	1/2" NPTF	FM40061	FM40062	FM40063	FM40064	FM40065	FM40066	FM40067	FM40068	FM40069	FM40070	
		G 1/2	FM40071	FM40072	FM40073	FM40074	FM40075	FM40076	FM40077	FM40078	FM40079	FM40080	
		D2 Manifold	FM40081	FM40082	FM40083	FM40084	FM40085	FM40086	FM40087	FM40088	FM40089	FM40090	
		C3 Manifold	FM40091	FM40092	FM40093	FM40094	FM40095	FM40096	FM40097	FM40098	FM40099	FM40100	
		7/8" -14	FM40101	FM40102	FM40103	FM40104	FM40105	FM40106	FM40107	FM40108	FM40109	FM40110	
		1/2" NPTF	FM40111	FM40112	FM40113	FM40114	FM40115	FM40116	FM40117	FM40118	FM40119	FM40120	
	7/8"-13T SPLINED	G 1/2	FM40121	FM40122	FM40123	FM40124	FM40125	FM40126	FM40127	FM40128	FM40129	FM40130	
		D2 Manifold	FM40131	FM40132	FM40133	FM40134	FM40135	FM40136	FM40137	FM40138	FM40139	FM40140	
		C3 Manifold	FM40141	FM40142	FM40143	FM40144	FM40145	FM40146	FM40147	FM40148	FM40149	FM40150	
		7/8" -14	FM40151	FM40152	FM40153	FM40154	FM40155	FM40156	FM40157	FM40158	FM40159	FM40160	
		1/2" NPTF	FM40161	FM40162	FM40163	FM40164	FM40165	FM40166	FM40167	FM40168	FM40169	FM40170	
		G 1/2	FM40171	FM40172	FM40173	FM40174	FM40175	FM40176	FM40177	FM40178	FM40179	FM40180	
	1-1/4" KEYED	D2 Manifold	FM40181	FM40182	FM40183	FM40184	FM40185	FM40186	FM40187	FM40188	FM40189	FM40190	
		C3 Manifold	FM40191	FM40192	FM40193	FM40194	FM40195	FM40196	FM40197	FM40198	FM40199	FM40200	
		7/8" -14	FM40201	FM40202	FM40203	FM40204	FM40205	FM40206	FM40207	FM40208	FM40209	FM40210	
		1/2" NPTF	FM40211	FM40212	FM40213	FM40214	FM40215	FM40216	FM40217	FM40218	FM40219	FM40220	
		G 1/2	FM40221	FM40222	FM40223	FM40224	FM40225	FM40226	FM40227	FM40228	FM40229	FM40230	
		D2 Manifold	FM40231	FM40232	FM40233	FM40234	FM40235	FM40236	FM40237	FM40238	FM40239	FM40240	
	1-1/4"-14T SPLINED	C3 Manifold	FM40241	FM40242	FM40243	FM40244	FM40245	FM40246	FM40247	FM40248	FM40249	FM40250	
		7/8" -14	FM40251	FM40252	FM40253	FM40254	FM40255	FM40256	FM40257	FM40258	FM40259	FM40260	
		1/2" NPTF	FM40261	FM40262	FM40263	FM40264	FM40265	FM40266	FM40267	FM40268	FM40269	FM40270	
		G 1/2	FM40271	FM40272	FM40273	FM40274	FM40275	FM40276	FM40277	FM40278	FM40279	FM40280	
		D2 Manifold	FM40281	FM40282	FM40283	FM40284	FM40285	FM40286	FM40287	FM40288	FM40289	FM40290	
		C3 Manifold	FM40291	FM40292	FM40293	FM40294	FM40295	FM40296	FM40297	FM40298	FM40299	FM40300	
	1-1/4" TAPER	7/8" -14	FM40301	FM40302	FM40303	FM40304	FM40305	FM40306	FM40307	FM40308	FM40309	FM40310	
		1/2" NPTF	FM40311	FM40312	FM40313	FM40314	FM40315	FM40316	FM40317	FM40318	FM40319	FM40320	
		G 1/2	FM40321	FM40322	FM40323	FM40324	FM40325	FM40326	FM40327	FM40328	FM40329	FM40330	
		D2 Manifold	FM40331	FM40332	FM40333	FM40334	FM40335	FM40336	FM40337	FM40338	FM40339	FM40340	
		C3 Manifold	FM40341	FM40342	FM40343	FM40344	FM40345	FM40346	FM40347	FM40348	FM40349	FM40350	
		7/8" -14	FM40351	FM40352	FM40353	FM40354	FM40355	FM40356	FM40357	FM40358	FM40359	FM40360	
	4 BOLT SQUARE MOUNT	1" KEYED	1/2" NPTF	FM40361	FM40362	FM40363	FM40364	FM40365	FM40366	FM40367	FM40368	FM40369	FM40370
			G 1/2	FM40371	FM40372	FM40373	FM40374	FM40375	FM40376	FM40377	FM40378	FM40379	FM40380
			D2 Manifold	FM40381	FM40382	FM40383	FM40384	FM40385	FM40386	FM40387	FM40388	FM40389	FM40390
			C3 Manifold	FM40391	FM40392	FM40393	FM40394	FM40395	FM40396	FM40397	FM40398	FM40399	FM40400
			7/8" -14	FM40401	FM40402	FM40403	FM40404	FM40405	FM40406	FM40407	FM40408	FM40409	FM40410
			1/2" NPTF	FM40411	FM40412	FM40413	FM40414	FM40415	FM40416	FM40417	FM40418	FM40419	FM40420
		1" SAE 6B SPLINED	G 1/2	FM40421	FM40422	FM40423	FM40424	FM40425	FM40426	FM40427	FM40428	FM40429	FM40430
			D2 Manifold	FM40431	FM40432	FM40433	FM40434	FM40435	FM40436	FM40437	FM40438	FM40439	FM40440
			C3 Manifold	FM40441	FM40442	FM40443	FM40444	FM40445	FM40446	FM40447	FM40448	FM40449	FM40450
			7/8" -14	FM40451	FM40452	FM40453	FM40454	FM40455	FM40456	FM40457	FM40458	FM40459	FM40460
			1/2" NPTF	FM40461	FM40462	FM40463	FM40464	FM40465	FM40466	FM40467	FM40468	FM40469	FM40470
			G 1/2	FM40471	FM40472	FM40473	FM40474	FM40475	FM40476	FM40477	FM40478	FM40479	FM40480
7/8"-13T SPLINED		D2 Manifold	FM40481	FM40482	FM40483	FM40484	FM40485	FM40486	FM40487	FM40488	FM40489	FM40490	
		C3 Manifold	FM40491	FM40492	FM40493	FM40494	FM40495	FM40496	FM40497	FM40498	FM40499	FM40500	
		7/8" -14	FM40501	FM40502	FM40503	FM40504	FM40505	FM40506	FM40507	FM40508	FM40509	FM40510	
		1/2" NPTF	FM40511	FM40512	FM40513	FM40514	FM40515	FM40516	FM40517	FM40518	FM40519	FM40520	
		G 1/2	FM40521	FM40522	FM40523	FM40524	FM40525	FM40526	FM40527	FM40528	FM40529	FM40530	
		D2 Manifold	FM40531	FM40532	FM40533	FM40534	FM40535	FM40536	FM40537	FM40538	FM40539	FM40540	
1-1/4" KEYED		C3 Manifold	FM40541	FM40542	FM40543	FM40544	FM40545	FM40546	FM40547	FM40548	FM40549	FM40550	
		7/8" -14	FM40551	FM40552	FM40553	FM40554	FM40555	FM40556	FM40557	FM40558	FM40559	FM40560	
		1/2" NPTF	FM40561	FM40562	FM40563	FM40564	FM40565	FM40566	FM40567	FM40568	FM40569	FM40570	
		G 1/2	FM40571	FM40572	FM40573	FM40574	FM40575	FM40576	FM40577	FM40578	FM40579	FM40580	
		D2 Manifold	FM40581	FM40582	FM40583	FM40584	FM40585	FM40586	FM40587	FM40588	FM40589	FM40590	
		C3 Manifold	FM40591	FM40592	FM40593	FM40594	FM40595	FM40596	FM40597	FM40598	FM40599	FM40600	
1-1/4"-14T SPLINED		7/8" -14	FM40601	FM40602	FM40603	FM40604	FM40605	FM40606	FM40607	FM40608	FM40609	FM40610	
		1/2" NPTF	FM40611	FM40612	FM40613	FM40614	FM40615	FM40616	FM40617	FM40618	FM40619	FM40620	
		G 1/2	FM40621	FM40622	FM40623	FM40624	FM40625	FM40626	FM40627	FM40628	FM40629	FM40630	
		D2 Manifold	FM40631	FM40632	FM40633	FM40634	FM40635	FM40636	FM40637	FM40638	FM40639	FM40640	
		C3 Manifold	FM40641	FM40642	FM40643	FM40644	FM40645	FM40646	FM40647	FM40648	FM40649	FM40650	
		7/8" -14	FM40651	FM40652	FM40653	FM40654	FM40655	FM40656	FM40657	FM40658	FM40659	FM40660	
1-1/4" TAPER		1/2" NPTF	FM40661	FM40662	FM40663	FM40664	FM40665	FM40666	FM40667	FM40668	FM40669	FM40670	
		G 1/2	FM40671	FM40672	FM40673	FM40674	FM40675	FM40676	FM40677	FM40678	FM40679	FM40680	
		D2 Manifold	FM40681	FM40682	FM40683	FM40684	FM40685	FM40686	FM40687	FM40688	FM40689	FM40690	
		C3 Manifold	FM40691	FM40692	FM40693	FM40694	FM40695	FM40696	FM40697	FM40698	FM40699	FM40700	

Additional mounts and porting available.

Visit our website [www.FluiDyneFP.com](http://www.FluiDyneFP.com) for additional information or contact customer service with your requirements.

[sales@FluiDyneFP.com](mailto:sales@FluiDyneFP.com) • [www.FluiDyneFP.com](http://www.FluiDyneFP.com)

# FluiDyne FM4 Series cont.

## FM4 SERIES

### FluiDyne FM4 Series

ALL MOTORS IN THIS CHART HAVE BLACK PAINT, CORESPONDING CASE DRAIN AND BUNA SEALS

MOUNTING	SHAFT	DISPLACEMENT cc (in <sup>3</sup> )												
		PORTS	80 cc (4.88)	100 cc (6.1)	125 cc (7.63)	160 cc (9.76)	200 cc (12.2)	250 cc (15.25)	280 cc (17.1)	305 cc (18.6)	400 cc (24.4)	500 cc (30.5)		
4 BOLT MAGNETO MOUNT	1" KEYED	7/8" -14 ORB	FM40701	FM40702	FM40703	FM40704	FM40705	FM40706	FM40707	FM40708	FM40709	FM40710		
		1/2" NPTF	FM40711	FM40712	FM40713	FM40714	FM40715	FM40716	FM40717	FM40718	FM40719	FM40720		
		G 1/2	FM40721	FM40722	FM40723	FM40724	FM40725	FM40726	FM40727	FM40728	FM40729	FM40730		
		D2 Manifold	FM40731	FM40732	FM40733	FM40734	FM40735	FM40736	FM40737	FM40738	FM40739	FM40740		
		C3 Manifold	FM40741	FM40742	FM40743	FM40744	FM40745	FM40746	FM40747	FM40748	FM40749	FM40750		
		7/8" -14 ORB	FM40751	FM40752	FM40753	FM40754	FM40755	FM40756	FM40757	FM40758	FM40759	FM40760		
		1/2" NPTF	FM40761	FM40762	FM40763	FM40764	FM40765	FM40766	FM40767	FM40768	FM40769	FM40770		
		G 1/2	FM40771	FM40772	FM40773	FM40774	FM40775	FM40776	FM40777	FM40778	FM40779	FM40780		
		D2 Manifold	FM40781	FM40782	FM40783	FM40784	FM40785	FM40786	FM40787	FM40788	FM40789	FM40790		
	C3 Manifold	FM40791	FM40792	FM40793	FM40794	FM40795	FM40796	FM40797	FM40798	FM40799	FM40800			
	1" SAE 6B SPLINED	7/8" -14 ORB	FM40801	FM40802	FM40803	FM40804	FM40805	FM40806	FM40807	FM40808	FM40809	FM40810		
		1/2" NPTF	FM40811	FM40812	FM40813	FM40814	FM40815	FM40816	FM40817	FM40818	FM40819	FM40820		
		G 1/2	FM40821	FM40822	FM40823	FM40824	FM40825	FM40826	FM40827	FM40828	FM40829	FM40830		
		D2 Manifold	FM40831	FM40832	FM40833	FM40834	FM40835	FM40836	FM40837	FM40838	FM40839	FM40840		
		C3 Manifold	FM40841	FM40842	FM40843	FM40844	FM40845	FM40846	FM40847	FM40848	FM40849	FM40850		
		7/8" -14 ORB	FM40851	FM40852	FM40853	FM40854	FM40855	FM40856	FM40857	FM40858	FM40859	FM40860		
		1/2" NPTF	FM40861	FM40862	FM40863	FM40864	FM40865	FM40866	FM40867	FM40868	FM40869	FM40870		
		G 1/2	FM40871	FM40872	FM40873	FM40874	FM40875	FM40876	FM40877	FM40878	FM40879	FM40880		
		D2 Manifold	FM40881	FM40882	FM40883	FM40884	FM40885	FM40886	FM40887	FM40888	FM40889	FM40890		
	C3 Manifold	FM40891	FM40892	FM40893	FM40894	FM40895	FM40896	FM40897	FM40898	FM40899	FM40900			
	7/8"-13T SPLINED	7/8" -14 ORB	FM40901	FM40902	FM40903	FM40904	FM40905	FM40906	FM40907	FM40908	FM40909	FM40910		
		1/2" NPTF	FM40911	FM40912	FM40913	FM40914	FM40915	FM40916	FM40917	FM40918	FM40919	FM40920		
		G 1/2	FM40921	FM40922	FM40923	FM40924	FM40925	FM40926	FM40927	FM40928	FM40929	FM40930		
		D2 Manifold	FM40931	FM40932	FM40933	FM40934	FM40935	FM40936	FM40937	FM40938	FM40939	FM40940		
		C3 Manifold	FM40941	FM40942	FM40943	FM40944	FM40945	FM40946	FM40947	FM40948	FM40949	FM40950		
		7/8" -14 ORB	FM40951	FM40952	FM40953	FM40954	FM40955	FM40956	FM40957	FM40958	FM40959	FM40960		
		1/2" NPTF	FM40961	FM40962	FM40963	FM40964	FM40965	FM40966	FM40967	FM40968	FM40969	FM40970		
		G 1/2	FM40971	FM40972	FM40973	FM40974	FM40975	FM40976	FM40977	FM40978	FM40979	FM40980		
		D2 Manifold	FM40981	FM40982	FM40983	FM40984	FM40985	FM40986	FM40987	FM40988	FM40989	FM40990		
	C3 Manifold	FM40991	FM40992	FM40993	FM40994	FM40995	FM40996	FM40997	FM40998	FM40999	FM41000			
	1-1/4" KEYED	7/8" -14 ORB	FM41001	FM41002	FM41003	FM41004	FM41005	FM41006	FM41007	FM41008	FM41009	FM41010		
		1/2" NPTF	FM41011	FM41012	FM41013	FM41014	FM41015	FM41016	FM41017	FM41018	FM41019	FM41020		
		G 1/2	FM41021	FM41022	FM41023	FM41024	FM41025	FM41026	FM41027	FM41028	FM41029	FM41030		
		D2 Manifold	FM41031	FM41032	FM41033	FM41034	FM41035	FM41036	FM41037	FM41038	FM41039	FM41040		
		C3 Manifold	FM41041	FM41042	FM41043	FM41044	FM41045	FM41046	FM41047	FM41048	FM41049	FM41050		
		4 BOLT WHEEL MOUNT	1" KEYED	7/8" -14 ORB	FM41051	FM41052	FM41053	FM41054	FM41055	FM41056	FM41057	FM41058	FM41059	FM41060
				1/2" NPTF	FM41061	FM41062	FM41063	FM41064	FM41065	FM41066	FM41067	FM41068	FM41069	FM41070
				G 1/2	FM41071	FM41072	FM41073	FM41074	FM41075	FM41076	FM41077	FM41078	FM41079	FM41080
				D2 Manifold	FM41081	FM41082	FM41083	FM41084	FM41085	FM41086	FM41087	FM41088	FM41089	FM41090
	C3 Manifold			FM41091	FM41092	FM41093	FM41094	FM41095	FM41096	FM41097	FM41098	FM41099	FM41100	
	7/8" -14 ORB			FM41101	FM41102	FM41103	FM41104	FM41105	FM41106	FM41107	FM41108	FM41109	FM41110	
	1/2" NPTF			FM41111	FM41112	FM41113	FM41114	FM41115	FM41116	FM41117	FM41118	FM41119	FM41120	
	G 1/2			FM41121	FM41122	FM41123	FM41124	FM41125	FM41126	FM41127	FM41128	FM41129	FM41130	
	D2 Manifold			FM41131	FM41132	FM41133	FM41134	FM41135	FM41136	FM41137	FM41138	FM41139	FM41140	
	C3 Manifold		FM41141	FM41142	FM41143	FM41144	FM41145	FM41146	FM41147	FM41148	FM41149	FM41150		
	1" SAE 6B SPLINED		7/8" -14 ORB	FM41151	FM41152	FM41153	FM41154	FM41155	FM41156	FM41157	FM41158	FM41159	FM41160	
			1/2" NPTF	FM41161	FM41162	FM41163	FM41164	FM41165	FM41166	FM41167	FM41168	FM41169	FM41170	
			G 1/2	FM41171	FM41172	FM41173	FM41174	FM41175	FM41176	FM41177	FM41178	FM41179	FM41180	
D2 Manifold			FM41181	FM41182	FM41183	FM41184	FM41185	FM41186	FM41187	FM41188	FM41189	FM41190		
C3 Manifold			FM41191	FM41192	FM41193	FM41194	FM41195	FM41196	FM41197	FM41198	FM41199	FM41200		
7/8" -14 ORB			FM41201	FM41202	FM41203	FM41204	FM41205	FM41206	FM41207	FM41208	FM41209	FM41210		
1/2" NPTF			FM41211	FM41212	FM41213	FM41214	FM41215	FM41216	FM41217	FM41218	FM41219	FM41220		
G 1/2			FM41221	FM41222	FM41223	FM41224	FM41225	FM41226	FM41227	FM41228	FM41229	FM41230		
D2 Manifold			FM41231	FM41232	FM41233	FM41234	FM41235	FM41236	FM41237	FM41238	FM41239	FM41240		
C3 Manifold	FM41241		FM41242	FM41243	FM41244	FM41245	FM41246	FM41247	FM41248	FM41249	FM41250			
7/8"-13T SPLINED	7/8" -14 ORB		FM41251	FM41252	FM41253	FM41254	FM41255	FM41256	FM41257	FM41258	FM41259	FM41260		
	1/2" NPTF		FM41261	FM41262	FM41263	FM41264	FM41265	FM41266	FM41267	FM41268	FM41269	FM41270		
	G 1/2		FM41271	FM41272	FM41273	FM41274	FM41275	FM41276	FM41277	FM41278	FM41279	FM41280		
	D2 Manifold		FM41281	FM41282	FM41283	FM41284	FM41285	FM41286	FM41287	FM41288	FM41289	FM41290		
	C3 Manifold		FM41291	FM41292	FM41293	FM41294	FM41295	FM41296	FM41297	FM41298	FM41299	FM41300		
	7/8" -14 ORB		FM41301	FM41302	FM41303	FM41304	FM41305	FM41306	FM41307	FM41308	FM41309	FM41310		
	1/2" NPTF		FM41311	FM41312	FM41313	FM41314	FM41315	FM41316	FM41317	FM41318	FM41319	FM41320		
	G 1/2		FM41321	FM41322	FM41323	FM41324	FM41325	FM41326	FM41327	FM41328	FM41329	FM41330		
	D2 Manifold		FM41331	FM41332	FM41333	FM41334	FM41335	FM41336	FM41337	FM41338	FM41339	FM41340		
C3 Manifold	FM41341		FM41342	FM41343	FM41344	FM41345	FM41346	FM41347	FM41348	FM41349	FM41350			
1-1/4" TAPER	7/8" -14 ORB		FM41351	FM41352	FM41353	FM41354	FM41355	FM41356	FM41357	FM41358	FM41359	FM41360		
	1/2" NPTF		FM41361	FM41362	FM41363	FM41364	FM41365	FM41366	FM41367	FM41368	FM41369	FM41370		
	G 1/2		FM41371	FM41372	FM41373	FM41374	FM41375	FM41376	FM41377	FM41378	FM41379	FM41380		
	D2 Manifold		FM41381	FM41382	FM41383	FM41384	FM41385	FM41386	FM41387	FM41388	FM41389	FM41390		
	C3 Manifold		FM41391	FM41392	FM41393	FM41394	FM41395	FM41396	FM41397	FM41398	FM41399	FM41400		
	32mm KEYED		7/8" -14 ORB	FM41001	FM41002	FM41003	FM41004	FM41005	FM41006	FM41007	FM41008	FM41009	FM41010	
			1/2" NPTF	FM41011	FM41012	FM41013	FM41014	FM41015	FM41016	FM41017	FM41018	FM41019	FM41020	
			G 1/2	FM41021	FM41022	FM41023	FM41024	FM41025	FM41026	FM41027	FM41028	FM41029	FM41030	
			D2 Manifold	FM41031	FM41032	FM41033	FM41034	FM41035	FM41036	FM41037	FM41038	FM41039	FM41040	
C3 Manifold			FM41041	FM41042	FM41043	FM41044	FM41045	FM41046	FM41047	FM41048	FM41049	FM41050		
7/8" -14 ORB			FM41051	FM41052	FM41053	FM41054	FM41055	FM41056	FM41057	FM41058	FM41059	FM41060		
1/2" NPTF			FM41061	FM41062	FM41063	FM41064	FM41065	FM41066	FM41067	FM41068	FM41069	FM41070		
G 1/2			FM41071	FM41072	FM41073	FM41074	FM41075	FM41076	FM41077	FM41078	FM41079	FM41080		
D2 Manifold			FM41081	FM41082	FM41083	FM41084	FM41085	FM41086	FM41087	FM41088	FM41089	FM41090		
C3 Manifold	FM41091		FM41092	FM41093	FM41094	FM41095	FM41096	FM41097	FM41098	FM41099	FM41100			

Visit our website [www.FluiDyneFP.com](http://www.FluiDyneFP.com) for additional information or contact customer service with your requirements.

[sales@FluiDyneFP.com](mailto:sales@FluiDyneFP.com) • [www.FluiDyneFP.com](http://www.FluiDyneFP.com)



# FluidDyne FM4 Series cont.

**FM4 SERIES**

## FluidDyne FM4 Series

ALL MOTORS IN THIS CHART HAVE BLACK PAINT, CORRESPONDING CASE DRAIN AND BUNA SEALS

MOUNTING	SHAFT	DISPLACEMENT cc (in <sup>3</sup> )											
		PORTS	80 cc (4.88)	100 cc (6.1)	125 cc (7.63)	160 cc (9.76)	200 cc (12.2)	250 cc (15.25)	280 cc (17.1)	305 cc (18.6)	400 cc (24.4)	500 cc (30.5)	
SAE B 2-BOLT MOUNT	1" KEYED	7/8" -14 ORB	FM41401	FM41402	FM41403	FM41404	FM41405	FM41406	FM41407	FM41408	FM41409	FM41410	
		1/2" NPTF	FM41411	FM41412	FM41413	FM41414	FM41415	FM41416	FM41417	FM41418	FM41419	FM41420	
		G 1/2	FM41421	FM41422	FM41423	FM41424	FM41425	FM41426	FM41427	FM41428	FM41429	FM41430	
		D2 Manifold	FM41431	FM41432	FM41433	FM41434	FM41435	FM41436	FM41437	FM41438	FM41439	FM41440	
		C3 Manifold	FM41441	FM41442	FM41443	FM41444	FM41445	FM41446	FM41447	FM41448	FM41449	FM41450	
	1" SAE 6B SPLINED	7/8" -14 ORB	FM41451	FM41452	FM41453	FM41454	FM41455	FM41456	FM41457	FM41458	FM41459	FM41460	
		1/2" NPTF	FM41461	FM41462	FM41463	FM41464	FM41465	FM41466	FM41467	FM41468	FM41469	FM41470	
		G 1/2	FM41471	FM41472	FM41473	FM41474	FM41475	FM41476	FM41477	FM41478	FM41479	FM41480	
		D2 Manifold	FM41481	FM41482	FM41483	FM41484	FM41485	FM41486	FM41487	FM41488	FM41489	FM41490	
		C3 Manifold	FM41491	FM41492	FM41493	FM41494	FM41495	FM41496	FM41497	FM41498	FM41499	FM41500	
	7/8"-13T SPLINED	7/8" -14 ORB	FM41501	FM41502	FM41503	FM41504	FM41505	FM41506	FM41507	FM41508	FM41509	FM41510	
		1/2" NPTF	FM41511	FM41512	FM41513	FM41514	FM41515	FM41516	FM41517	FM41518	FM41519	FM41520	
		G 1/2	FM41521	FM41522	FM41523	FM41524	FM41525	FM41526	FM41527	FM41528	FM41529	FM41530	
		D2 Manifold	FM41531	FM41532	FM41533	FM41534	FM41535	FM41536	FM41537	FM41538	FM41539	FM41540	
		C3 Manifold	FM41541	FM41542	FM41543	FM41544	FM41545	FM41546	FM41547	FM41548	FM41549	FM41550	
	1-1/4" KEYED	7/8" -14 ORB	FM41551	FM41552	FM41553	FM41554	FM41555	FM41556	FM41557	FM41558	FM41559	FM41560	
		1/2" NPTF	FM41561	FM41562	FM41563	FM41564	FM41565	FM41566	FM41567	FM41568	FM41569	FM41570	
		G 1/2	FM41571	FM41572	FM41573	FM41574	FM41575	FM41576	FM41577	FM41578	FM41579	FM41580	
		D2 Manifold	FM41581	FM41582	FM41583	FM41584	FM41585	FM41586	FM41587	FM41588	FM41589	FM41590	
		C3 Manifold	FM41591	FM41592	FM41593	FM41594	FM41595	FM41596	FM41597	FM41598	FM41599	FM41600	
	1-1/4"-14T SPLINED	7/8" -14 ORB	FM41601	FM41602	FM41603	FM41604	FM41605	FM41606	FM41607	FM41608	FM41609	FM41610	
		1/2" NPTF	FM41611	FM41612	FM41613	FM41614	FM41615	FM41616	FM41617	FM41618	FM41619	FM41620	
		G 1/2	FM41621	FM41622	FM41623	FM41624	FM41625	FM41626	FM41627	FM41628	FM41629	FM41630	
		D2 Manifold	FM41631	FM41632	FM41633	FM41634	FM41635	FM41636	FM41637	FM41638	FM41639	FM41640	
		C3 Manifold	FM41641	FM41642	FM41643	FM41644	FM41645	FM41646	FM41647	FM41648	FM41649	FM41650	
	1-1/4" TAPER	7/8" -14 ORB	FM41651	FM41652	FM41653	FM41654	FM41655	FM41656	FM41657	FM41658	FM41659	FM41660	
		1/2" NPTF	FM41661	FM41662	FM41663	FM41664	FM41665	FM41666	FM41667	FM41668	FM41669	FM41670	
		G 1/2	FM41671	FM41672	FM41673	FM41674	FM41675	FM41676	FM41677	FM41678	FM41679	FM41680	
		D2 Manifold	FM41681	FM41682	FM41683	FM41684	FM41685	FM41686	FM41687	FM41688	FM41689	FM41690	
		C3 Manifold	FM41691	FM41692	FM41693	FM41694	FM41695	FM41696	FM41697	FM41698	FM41699	FM41700	
	32mm KEYED	7/8" -14 ORB	FM41701	FM41702	FM41703	FM41704	FM41705	FM41706	FM41707	FM41708	FM41709	FM41710	
		1/2" NPTF	FM41711	FM41712	FM41713	FM41714	FM41715	FM41716	FM41717	FM41718	FM41719	FM41720	
		G 1/2	FM41721	FM41722	FM41723	FM41724	FM41725	FM41726	FM41727	FM41728	FM41729	FM41730	
		D2 Manifold	FM41731	FM41732	FM41733	FM41734	FM41735	FM41736	FM41737	FM41738	FM41739	FM41740	
		C3 Manifold	FM41741	FM41742	FM41743	FM41744	FM41745	FM41746	FM41747	FM41748	FM41749	FM41750	
	BEARING- LESS	NO SHAFT	7/8" -14 ORB	FM41751	FM41752	FM41753	FM41754	FM41755	FM41756	FM41757	FM41758	FM41759	FM41760
			D2 Manifold	FM41761	FM41762	FM41763	FM41764	FM41765	FM41766	FM41767	FM41768	FM41769	FM41770
			C3 Manifold	FM41771	FM41772	FM41773	FM41774	FM41775	FM41776	FM41777	FM41778	FM41779	FM41780

Additional mounts and porting available.

Visit our website [www.FluidDyneFP.com](http://www.FluidDyneFP.com) for additional information or contact customer service with your requirements.



[sales@FluidDyneFP.com](mailto:sales@FluidDyneFP.com) • [www.FluidDyneFP.com](http://www.FluidDyneFP.com)

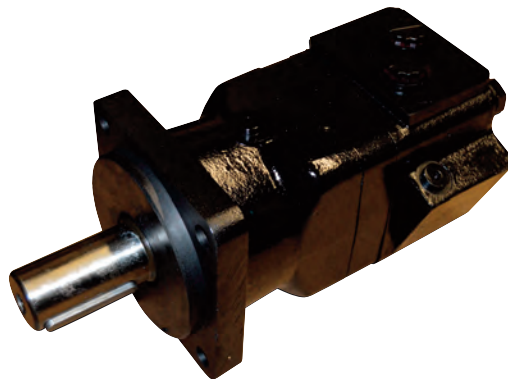
# FluidDyne 109 - 4,000 Series

**4,000 SERIES**

			DISPLACEMENT cc/r (in <sup>3</sup> /r)						
			160 cc (9.8)	200 cc (12.3)	250 cc (15.4)	315 cc (19.9)	400 cc (25)	500 cc (32)	630 cc (38)
MOUNTING	SHAFTS	FluidDyne Char-Lynn Reference	160 cc (9.9)	205 cc (12.5)	245 cc (15)	310 cc (19)	395 cc (24)	495 cc (30)	625 cc (38)
		PORTS							
4 BOLT STD SAE B FLANGE (4.0" PILOT)	1-1/4" KEYED	1-1/16" -12 O-RING STAGGERED	WF1091102	WF1091103	WF1091104	WF1091105	WF1091106	WF1091212	WF1091215
		3/4" SPLIT FLANGE	WF1091002	WF1091003	WF1091055	WF1091056	WF1091057	WF1091334	—
	1-5/8" TAPERED	1-1/16" -12 O-RING STAGGERED	WF1091109	WF1091110	WF1091111	WF1091112	WF1091113	WF1091479	WF1091455
		3/4" SPLIT FLANGE	WF1091007	WF1091008	WF1091059	WF1091402	WF1091061	—	—
	1-1/4" 14T SPLINE	1-1/16" -12 O-RING STAGGERED	WF1091116	WF1091117	WF1091118	WF1091119	WF1091120	WF1091363	WF1091219
		3/4" SPLIT FLANGE	WF1091012	WF1091013	WF1091063	WF1091064	WF1091065	—	—
4 BOLT STD SAE C MOUNT (5.0" PILOT)	1-1/4" KEYED	1-1/16" -12 O-RING STAGGERED	WF1091481	WF1091296	WF1091427	WF1091311	WF1091366	WF1091206	WF1091207
		3/4" SPLIT FLANGE	WF1091287	WF1091203	WF1091304	WF1091220	WF1091280	WF1091316	WF1091337
	1-1/4" 14T SPLINE	1-1/16" -12 O-RING STAGGERED	WF1091287	WF1091203	WF1091304	WF1091220	WF1091280	WF1091316	WF1091337
		3/4" SPLIT FLANGE	WF1091370	—	WF1091263 WF1091450	WF1091278	WF1091181	—	—
	40mm KEYED	G 3/4 (BSP) O-RING	WF1091227	WF1091224	WF1091225	WF1091189	WF1091190	WF1091267	WF1091355
	1-1/2" 17T SPLINE	1-1/16" -12 O-RING STAGGERED	WF1091275	—	WF1091330	WF1091283	WF1091453	WF1091290	WF1091400
G 3/4 (BSP) O-RING		WF1091193	WF1091194	WF1091195	WF1091196	WF1091197	WF1091383	—	
WHEEL MOTOR	1-1/4" KEYED	1-1/16" -12 O-RING STAGGERED	WF1101076	WF1101077	WF1101078	WF1101079	WF1101080	—	WF1101122
		3/4" SPLIT FLANGE	WF1101002	WF1101003	WF1101041	—	—	—	—
	1-5/8" TAPERED	1-1/16" -12 O-RING STAGGERED	WF1101083	WF1101084	WF1101085	WF1101086	WF1101087	WF1101116	WF1101117
		3/4" SPLIT FLANGE	WF1101007	—	—	WF1101142	WF1101047	—	—
	40mm KEYED	G 3/4 (BSP) O-RING	WF1101110	WF1101111	WF1101122	WF1101113	WF1101125	WF1101149	—
	MAX TORQUE (IN-LBS)	CONTINUOUS	4,166	5,209	6,430	8,500	9,680	11,000	11,656
INTERMITTENT		5,956	6,350	7,853	10,206	11,223	12,461	13,248	
MAX PRESSURE (PSI)	CONTINUOUS	2,900	2,900	2,900	2,610	2,320	2,030	1,813	
	INTERMITTENT	3,480	3,480	3,480	3,480	3,045	2,610	2,320	
MAX FLOW (GPM)	CONTINUOUS	26	33	33	33	33	33	33	
	INTERMITTENT	33.0	39.6	39.6	39.6	39.6	39.6	39.6	
MAX RPM	CONTINUOUS	614	615	495	380	302	237	196	
	INTERMITTENT	770	743	592	458	364	284	233	
WEIGHT (LBS)		44	44	45	46	48	52	53	

Additional mounts and porting available.

Visit our website [www.FluidDyneFP.com](http://www.FluidDyneFP.com) for additional information or contact customer service with your requirements.



[sales@FluidDyneFP.com](mailto:sales@FluidDyneFP.com) • [www.FluidDyneFP.com](http://www.FluidDyneFP.com)

			DISPLACEMENT cc/r (in <sup>3</sup> /r)							
			195 cc (11.9)	245 cc (15)	310 cc (19)	395 cc (24.2)	490 cc (30)	625 cc (38)	800 cc (49)	985 cc (60)
FluiDyne			195 cc (11.9)	245 cc (15)	310 cc (19)	390 cc (23.9)	490 cc (30)	625 cc (38)	800 cc (49)	985 cc (60)
Char-Lynn Reference	CHAR-LYNN REFERENCE	PORTS	195 cc (11.9)	245 cc (15)	310 cc (19)	390 cc (23.9)	490 cc (30)	625 cc (38)	800 cc (49)	985 cc (60)
4 BOLT STD SAE C, FLANGE	1-1/2" KEYED	1-5/16" -12 SAE	WF1121064	WF1121065	WF1121066	WF1121067	WF1121068	WF1121107	WF1121458	WF1121069
		G 1 (BSP)	WF1121094	WF1121147	—	WF1121005	—	—	—	—
		4-BOLT 3/4" SPLIT FLANGE	WF1121001	WF1121019 WF1121493	WF1121020	WF1121005	WF1121006	WF1121472 WF1121239	—	WF1121021
	40mm KEYED	1-5/16" -12 SAE	WF1121530	—	WF1121336	WF1121452	WF1121191	WF1121180	—	WF1121162
		G 1 (BSP)	WF1121094 WF1125000	WF1121095	WF1121096	WF1121097	WF1121098 WF1121197	WF1121111	—	WF1121099
		4-BOLT 3/4" SPLIT FLANGE	WF1121256	—	WF1121303	WF1121124	WF1121112	WF1121127	—	WF1121115
	1-1/2" 17T SPLINE	1-5/16" -12 SAE	WF1121058	WF1121059	WF1121060	WF1121061	WF1121062	WF1121109	WF1121580	WF1121063
		G 1 (BSP)	WF1121088	WF1121089	WF1121090	WF1121091	WF1121092	WF1121335	WF1121467	WF1121093
		4-BOLT 3/4" SPLIT FLANGE	WF1121419	WF1121025	WF1121026	WF1121017	WF1121018	WF1125000	—	WF1121027
	1-3/4" TAPERED	1-5/16" -12 SAE	WF1121052	WF1121053 WF1121166	WF1121054	WF1121055	WF1121056 WF1121202	WF1121416	WF1121325	WF1121057 WF1121540
		4-BOLT 3/4" SPLIT FLANGE	WF1121007	WF1121022	WF1121023	WF1121011	WF1121012	WF1121013	—	WF1121024
		G 1 (BSP)	—	—	—	WF1121192 W/VITON	WF1121320	WF1121213 W/VITON	—	WF1121110
4 BOLT STD GLOBAL (150) MOUNT	50mm KEYED	G 1 (BSP)	WF1121428	WF1121427	WF1121217	WF1121218	WF1121215	WF1121216	WF1121219	WF1121220
		1-5/16" -12 SAE	—	WF1125001	WF1121282	WF1121248	WF1121212	WF1121230	WF1121231	WF1121237
WHEEL MOTOR	40mm KEYED	G 1 (BSP)	WF1131082	WF1131083	WF1131084	WF1131085	WF1131086	WF1131100	—	WF1131087
		1-5/16" -12 SAE	WF1131064	WF1131065	WF1131066	WF1131067	WF1131068	WF1131095	—	WF1131069
	1-1/2" KEYED	4-BOLT 3/4" SPLIT FLANGE	WF1131047	WF1131020	WF1131021	WF1131051	WF1131052	—	—	WF1131022
		1-5/16" -12 SAE	WF1131076	WF1131077	WF1131078	WF1131079	WF1131080	WF1131096	—	WF1131081
	1-1/2" 17T SPLINE	1-5/16" -12 SAE	WF1131070	WF1131070	WF1131070	WF1131070	WF1131070	WF1131070	—	WF1131070
		4-BOLT 3/4" SPLIT FLANGE	WF1131053	WF1131023	WF1131024	WF1131057	WF1131058	WF1131124	—	WF1131025
1-3/4" TAPERED	1-5/16" -12 SAE	WF1131070	WF1131070	WF1131070	WF1131070	WF1131070	WF1131070	—	WF1131070	
	4-BOLT 3/4" SPLIT FLANGE	WF1131053	WF1131023	WF1131024	WF1131057	WF1131058	WF1131124	—	WF1131025	
BEARINGLESS	1-5/16" SAE	WF1141031	WF1141032	WF1141033	WF1141034	WF1141035	WF1141055	—	WF1141036	
	G 1 (BSP)	WF1141043	WF1141044	WF1141045	WF1141046	WF1141047	—	—	WF1141048	
MAX TORQUE (IN-LBS)	CONTINUOUS	5,088	6,504	8,232	10,344	10,752	11,772	12,216	13,896	
	INTERMITTENT	7,608	10,440	11,820	14,652	16,680	12,216	14,604	16,596	
MAX PRESSURE (PSI)	CONTINUOUS	3,000	3,000	3,000	3,000	2,500	2,000	1,800	1,800	
	INTERMITTENT	4,500	4,500	4,500	4,500	4,000	2,500	2,000	2,000	
MAX FLOW (GPM)	CONTINUOUS	40	40	40	40	40	40	40	40	
	INTERMITTENT	45	55	60	60	60	60	60	60	
MAX RPM	CONTINUOUS	775	615	485	383	307	241	184	153	
	INTERMITTENT	866	834	698	563	454	355	276	230	
WEIGHT (LBS)		45	45	46	47	49	51	29	30	

Additional mounts and porting available.

Visit our website [www.FluiDyneFP.com](http://www.FluiDyneFP.com) for additional information or contact customer service with your requirements.





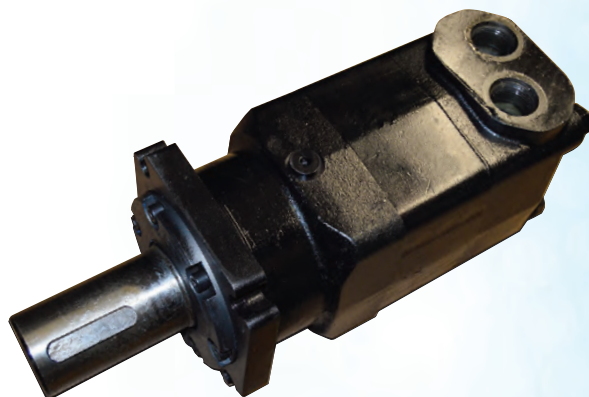
# FluiDyne 119 - 10,000 Series

**10,000 SERIES**

FluiDyne 119 - 10,000 SERIES							
			DISPLACEMENT cc/r (in <sup>3</sup> /r)				
			315 cc 333 (20.3)	500 cc 518 (31.6)	630 cc 666 (40.6)	1000 cc 990 (60.4)	
			Char-Lynn Reference	345 cc (21)	480 cc (29.3)	665 cc (40.6)	940 cc (54.7)
MOUNTING	SHAFTS	PORTS					
STANDARD SAE C-MOUNT	2-1/4" KEYED	1-5/16" O-RING	WF1191028	WF1191029	WF1191030	WF1191031	
		1-1/4" SPLIT FLANGE	WF1191040	WF1191041	WF1191042	WF1191043	
	2-1/8" 16T SPLINE	1-5/16" O-RING	WF1191032	WF1191033	WF1191034	WF1191035	
		1-1/4" SPLIT FLANGE	WF1191044	WF1191045	WF1191046	WF1191047	
	2-1/4" TAPERED	1-5/16" O-RING	WF1191036	WF1191037	WF1191038	WF1191039	
		1-1/4" SPLIT FLANGE	WF1191048	WF1191049	WF1191050	WF1191051	
WHEEL MOUNT	2-1/4" KEYED	1-5/16" O-RING	WF1201005	WF1201006	WF1201007	WF1201008	
		1-1/4" SPLIT FLANGE	WF1201017	WF1201018	WF1201019	WF1201020	
	2-1/8" 16T SPLINE	1-5/16" O-RING	WF1201009	WF1201010	WF1201011	WF1201012	
		1-1/4" SPLIT FLANGE	WF1201021	WF1201022	WF1201023	WF1201024	
	2-1/4" TAPERED	1-5/16" O-RING	WF1201013	WF1201014	WF1201015	WF1201016	
		1-1/4" SPLIT FLANGE	WF1201025	WF1201026	WF1201027	WF1201028	
BEARINGLESS N/A	1-5/16" O-RING		WF1211007	WF1211008	WF1211009	WF1211010	
	1-1/4" SPLIT FLANGE		WF1211011	WF1211012	WF1211013	WF1211014	
MAX TORQUE (IN-LBS)	CONTINUOUS		8,181	12,824	14,504	17,821	
	INTERMITTENT		9,728	15,742	17,688	20,164	
MAX PRESSURE (PSI)	CONTINUOUS		3,045	3,045	3,045	3,045	
	INTERMITTENT		3,625	3,625	3,625	3,625	
MAX FLOW (GPM)	CONTINUOUS		39.6	39.6	39.6	39.6	
	INTERMITTENT		59.4	59.4	59.4	59.4	
MAX RPM	CONTINUOUS		446	386	223	145	
	INTERMITTENT		649	425	331	220	
WEIGHT (LBS)	STANDARD OR WHEEL MOUNT		96.0	100.0	100.0	104.0	
	BEARINGLESS		69.0	69.0	73.0	77.0	

Additional mounts and porting available.

Visit our website [www.FluiDyneFP.com](http://www.FluiDyneFP.com) for additional information or contact customer service with your requirements.



[sales@FluiDyneFP.com](mailto:sales@FluiDyneFP.com) • [www.FluiDyneFP.com](http://www.FluiDyneFP.com)

## PUMPS & MOTORS

▲ FluidDyne

■ Remanufactured products

◆ Veljan

### VICKERS / EATON

#### VHO / VQ Single, Double & Triple\*

- ▲ ■ 20, 25, 30, 35, 45 (V/VQ/VT) 50V
- ▲ ■ 2520, 3520, 3525, 4520, 4525, 4535 (V/VQ)
- ▲ ■ 2520, 3520, 3525, 4520, 4525, 4535 VQSV10
- ▲ ■ Cart Kits available for all sizes

\*Caterpillar part numbered pumps also available

#### Round Pumps

- V104/5, V108/9, V110/1, V124/5, V128/9, V134/5
- V144/5, V148/9, V350/3/6, V360/1/2, V368/9/70
- VC108, 138, 148 Combination Pumps

#### Square Pumps

- ▲ ■ V10F, V10NF, V10P, V20F, V20NF, V20P
- ▲ ■ V2010F, V2010NF, V2010P, V2020F, V2020NF, V2020P
- ▲ ■ V210, V214, V230

#### Transmissions

- TA15, 19, 1919, 19V

#### Motors

- MHT 32, 50, 70, 90, 110, 150, 250, 330, 440, 500, 750, 1000
- ▲ ■ 25M, 26M, 35M, 36M, 45M, 46M, 50M
- ▲ ■ M2-210
- ▲ ■ MFB 5, 10, 20, 29
- ▲ ■ MMFB 5, 10, 20, 29

#### Piston Pumps

- ▲ ■ PVH 57, 74, 98, 131, 141
- ▲ ■ PVE 12, 19, 21, 27\*, 35\*, 47\*, 62\*
- ▲ ■ PVB 5, 6, 10, 15, 20, 29, 45, 45A, 90\*
- ▲ ■ PVQ 10, 13, 20, 25\*, 32, 40, 45
- PVM 18, 20, 45, 50, 57, 63, 74, 81, 98, 106, 131, 141
- ▲ ■ PFB/MPFB 5, 6\*, 10, 15\*, 20\*, 29\*, 45\*

\*Only available in reman

### DENISON

- PV6, 10, 15, 20, 29

### OILGEAR

- PVW (W) (H) 04, 06, 10, 11, 15, 20, 25, 34, 45, 60
- PVW (J) 11, 14, 22, 25, 34, 46, 64, 76, 98, 130
- PVG 048, 065, 075, 100, 130, 150

### VELJAN

- ◆ Single T6, T7
- ◆ Double T6, T67, T7
- ◆ Triple T6, T67, T7
- ◆ Drive Train T6\*R
- ◆ M4C, M4D, M4E
- ◆ M3B
- ◆ TXB1/TXB2

### GEROLER/GEROTOR MOTORS

- ▲ H SERIES (101), FM1
- ▲ S SERIES (103), FM3
- ▲ 2000, 4000 (104, 109), FM4, FM9
- ▲ 6000, 10,000 (112, 119), FM19
- ▲ J SERIES (129), FM29
- ▲ 500 Series (500/501), FM50
- ▲ 211 Series

### REXROTH

- ▲ ■ A10V(S) 10, 18, 28, 45, 60, 63, 71, 74, 100, 140
- ▲ ■ A4V(S) 40, 071, 125, 180, 250

### GEAR PUMPS

- ▲ C101/102 Dump
- ▲ Aluminum Gear

### RACINE/BOSCH

- PSV 10, 15, 20, 25, 40, 80, 100
- PVF, PVQ, PVR
- PVK, PVT, PVS
- VPV
- ▲ ■ H20, H80

INTERCHANGES WITH: EATON • SAUER-DANFOSS • WHITE • PARKER / ROSS / TRW • CHARLYNN

## VALVES

#### Relief Valves

- ▲ ■ CT/CG/CS 5/CS/CF\* 03, 06, 10
- ▲ ■ R/C/T/, R/C/S\*, RG/RCG 03, 06, 10
- ▲ ■ C175
- ◆ R1E Remote Relief

#### Check Valves

- ▲ ■ C5G, C2
- ▲ ■ 4CT, 4CG
- DT8P1
- ◆ C5V 06, 08, 10, 12

#### Directional Valves

- ▲ ■ D03 - DG4V3, 4WE6
- ▲ ■ D05 - DG4S401, 4WE10
- ▲ ■ DG5V5, DG5S4 02\*, DG5S4 04, 4WEH10, 4WEH16
- ▲ ■ D08 - DG5S4 06, DG5S8/H8, 4WEH25
- ▲ ■ DG17S/V, D03/D05

\*Only available in reman

#### Flow Control Valves

- ▲ ■ FCG 02/03

#### Pressure Controls

- ▲ ■ X (C) G OR T 03, 06, 10

\*Only available in reman

#### Flange Mounted Valves

- ◆ R5V/R5S/R5U: 06, 08, 10, 12
- ◆ C5V 06, 08, 10, 12

#### Unloading Relief Valves

- ▲ ■ URG/T 1/2, 06/10

#### Stack Modules

- ▲ ■ DGM Stacks, Flow Control, Reliefs, Checks, Pressure Controls (D03, 5, 7, 8)

#### Needle Valves (SAE/NPT)

- ▲ ■ 1/8" through 1-1/4"

\*Manufacturers names and numbers are for reference only

FluidDyne has a full range of replacement filters elements and filter housings for: Pall • Hydac • Hycon • Schroeder • Vickers • Parker



FluidDyne supports the distributors providing local knowledge and assistance to fluid power customers.

### Our people provide extensive support:

- Engineering expertise
- Decoding special part numbers
- Identification of parts within units
- Advice on component repair and assembly
- Component failure analysis
- New application component selection
- Same day shipments
- 18 month warranty



**FluidDyne's** low speed, high torque motors are a direct interchange with Eaton/Charlynn (and other brands). They provide superior performance with:

- Low-pressure start-up with advanced manufacturing techniques
- High-pressure shaft seals for series or parallel applications
- Low noise with proprietary fluid distribution system
  - Longer life with special driver-link design
  - Easy installation with compact design

**Call, email, chat...we're ready to help!**



31915 Groesbeck Highway • Fraser, Michigan 48026  
PH: 1-586-296-7200 • FAX: 1-586-296-7210  
Email: [sales@FluidDyneFP.com](mailto:sales@FluidDyneFP.com)

[www.FluidDyneFP.com](http://www.FluidDyneFP.com)

For most recent brochure, and information on our other products please visit [www.fluidynefp.com](http://www.fluidynefp.com)



FluidDyne Contact Info and Website

