



High Performance, Single Stage, Solenoid Operated D03/D05 Valves

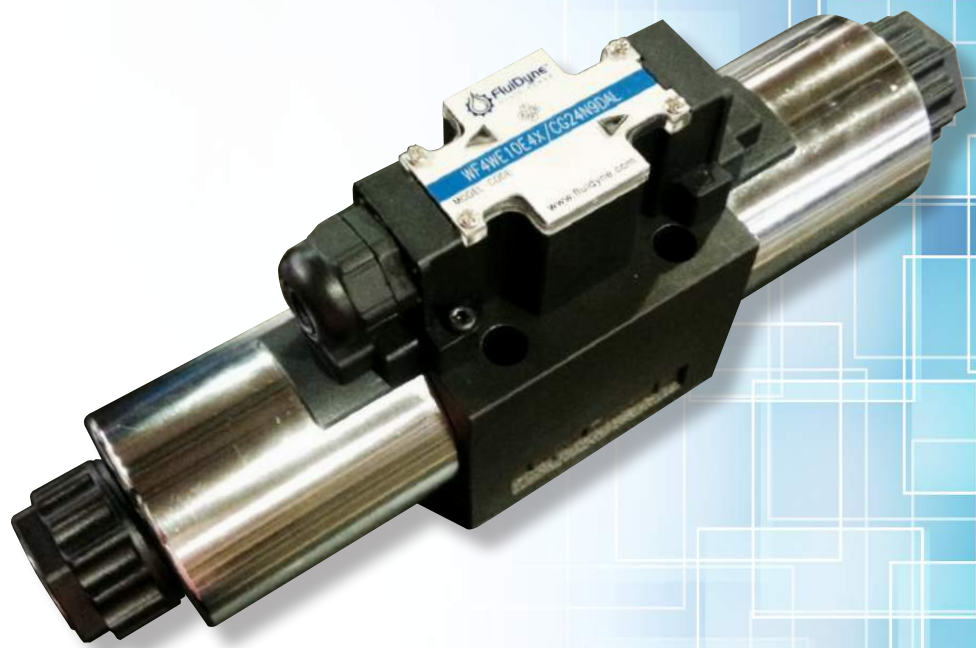
Direct Acting Directional Valves

WE6/WE10 Style Valves

4-way 2/3-position, and 3-way 2-position Valves

Features:

- Operating pressures to 4,500 psi*
- Field serviceable coils with both DIN and wire housing
- 18 month warranty



Our People Make the Difference

Our promise at FluidDyne is to provide the fluid power industry with high quality, fully tested and technically supported hydraulic pumps, motors and valves. We understand and value the local service and support provided by repair shops, resellers and distributors to the OEM's and users of fluid power applications. We do not compete with our customers; rather we work with our channels as partners in their success and to advance the technology of fluid power.

Our strength is our people. We focus on personal development and a long term commitment to our staff. We recognize knowledgeable people are a valuable part of the service a business organization provides. We stress a commitment to learning and customer support at every level of the FluidDyne organization. Accounting, Customer Service, Engineering, Inventory, Management, Manufacturing, Quality and Shipping all work together to serve our customer. We believe in treating everyone inside and outside the company with professionalism and respect.

Application and technical support for our products is easy access, and we pride ourselves in not having a switchboard or phone tree. The person, who picks up the phone, helps the customer. We like it simple, we like it direct. Our inventory is extensive and our people are skilled at assembly, modifications and testing. Our product leaves the factory fast (often the same day) and it leaves correct, tested and documented. If there is a mistake, we work hard to make it right, quickly and fairly.

Please call or email to learn more about FluidDyne. Our products and people make us special.

- 18 month warranty
- Blind drop shipments
- Custom proprietary software allows immediate & accurate technical support, quoting, order entry & bill of material information
- End customer protection
- Extensive Michigan inventory
- ISO Certified 9001:2008
- New FluidDyne and remanufactured products
- Outstanding customer service
- Performance you have come to expect
- Same day shipments
- Standard & modified products
- Multiple test stands which allow for quick 100% testing of all units shipped

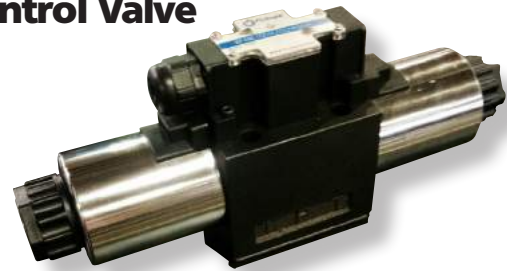


www.FluidDyneFP.com

Model Code Breakdown

NG6/D03 and NG10/D05 Directional Control Valve

- NG6/NG10 Subplate Mounted Directional Valves
- Operating Pressures 4,500 psi* for P-A-B
- Tank Pressures up to 2,300 psi
- NG6/D03 Flows up to 21 gpm
- NG10/D05 Flows up to 32 gpm



WF	4	WE	10	J	4X	/	C	W110	N9	DAL				
----	---	----	----	---	----	---	---	------	----	-----	--	--	--	--

Flow Paths

3 service ports = 3
4 service ports = 4

Size

Size NG6 = 6
NFPA - D03
Size NG10 = 10
NFPA - D05

Spool Options

Spool e.g. C, E, EA, EB,H, J, etc.¹⁾
See Spool Symbols for options

Series²⁾

D03
Series 60 to 69 = 6X
D05
Series 30 to 39 (DIN conn.) = 3X
Series 40 to 49 (wire housing conn.) = 4X

De-Energized Condition

Spring return = No code
Without spring return = O
Detented; no spring return = OF

Solenoid Type

High performance solenoid
wet pin (oil-immersed) with removable coil
Size D03 = E
Size D05 = C

Coil Voltage

12 V DC = G12
24 V DC = G24
96 V DC = G96
196 V DC = G196
110/120 V AC 50/60 Hz = W110
220/240 V AC 50/60 Hz = W220
96/196 V DC solenoid with built-in rectifier in angled plug, for connection to 110 V/220 V AC, frequency-independent (available with RZ55 DIN Connector) = W110R = W220R

Mounting Face Alterations

No code = No locating hole (standard)
/60 = With locating hole
/62 = With locating hole & pin

Seals

No code = BR seals (standard)
V = FKM seals

Port Restrictions

No code = Without orifice insert (standard)
B08 = Orifice Ø 0.031 (0.8 mm)
B10 = Orifice Ø 0.039 (1.0 mm)
B12 = Orifice Ø 0.047 (1.2 mm)

Applicable if flow exceeds performance limit of valve. Location designated by preceding alpha code. (B- in P port, H- in A port, R- in B port, N- A&B port, X- in T port).

Electrical Connection Types

Direct Solenoid Connections (DIN 24340 form A)

K4³⁾ = Without angled plug but with cap
Z45 = Angled plug
Z45L = Angled plug with light
Z55L = Large angled plug with light
RZ55L = Large angled plug with rectifier & light
Z55L1 = Plug w/ light & Zener surge suppression

Central Solenoid Connections Wired Housing

DA = Wire housing with cable gland
DAL = Wire housing with cable gland & lights

Solenoid Override

N9 = With protected manual override (standard)
N = Covered manual override, with rubber boot
No code = Without manual override

*AC Valves Max Press. Rating is 4500 psi
DC Valves Max Press. Rating is 4000 psi

¹⁾ See spool configurations on following page

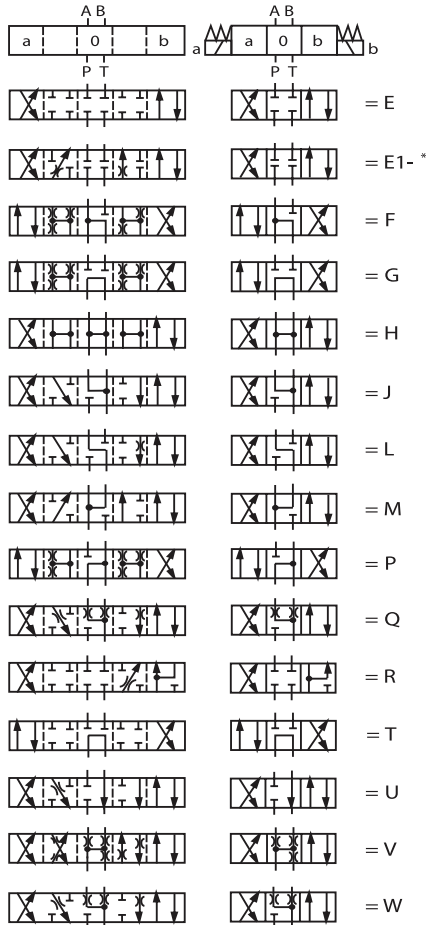
²⁾ Series externally interchangeable within the same decade (ie: 30-39)

³⁾ Appropriate DIN connectors included on FluiDyne valves

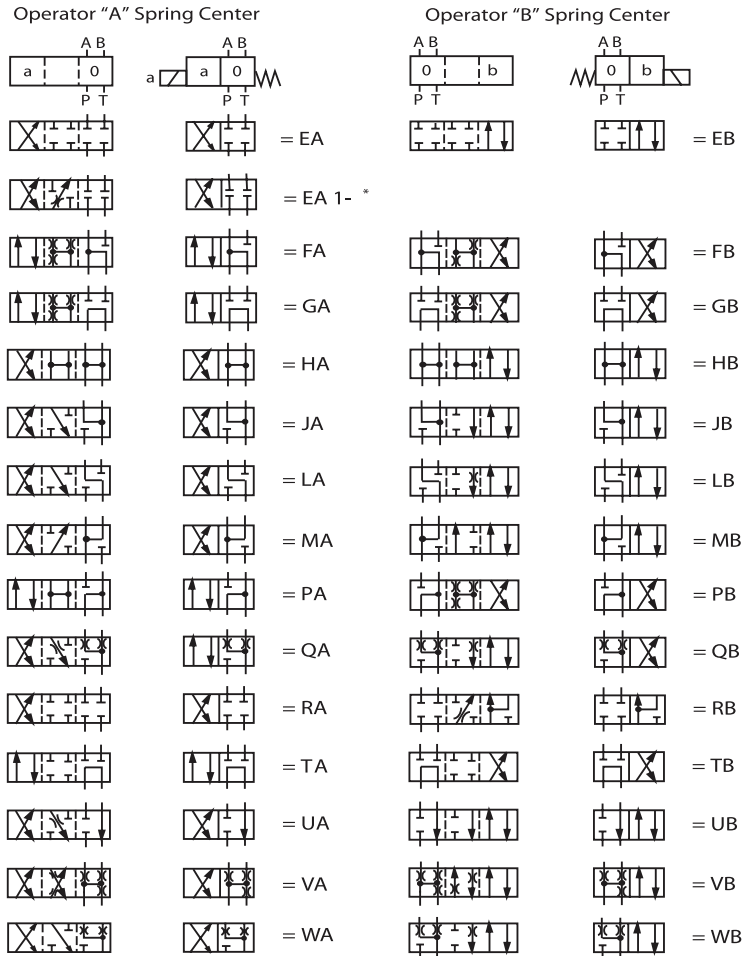
Symbols for Directional Control Valves

4 Way Valves; 2 and 3 Position

Double Solenoid 3-Position

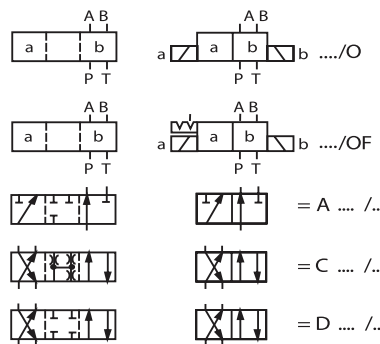


Single Solenoid 2-Position

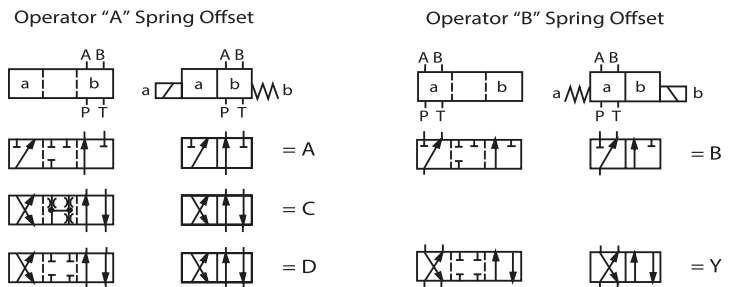


2 Position – 3 and 4 Way Valves

Double Solenoid



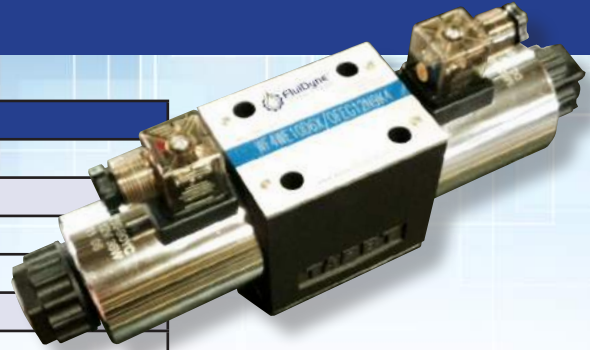
Single Solenoid



Additional Parts

D03 PARTS

PART NUMBER	DESCRIPTION
SEAL KITS	
WF86175	WF4WE6 SEAL KIT BUNA
WF86176	WF4WE6 SEAL KIT VITON
DIN COILS	
WF86137	COIL D03 DIN 4WE6 12 VDC
WF86138	COIL D03 DIN 4WE6 24 VDC
WF86245	COIL D03 DIN 4WE6 110R/(G96) VDC
WF86246	COIL D03 DIN 4WE6 220R/(G196) VDC
WF86140	COIL D03 DIN 4WE6 110 VAC
WF86139	COIL D03 DIN 4WE6 220 VAC
WIRE HOUSING COILS	
WF86144	COIL D03 4WE6 12 VDC WIRED DAL
WF86145	COIL D03 4WE6 24 VDC WIRED DAL
WF86159	COIL D03 4WE6 110 VAC WIRE DAL
WF86235	COIL D03 4WE6 220 VAC WIRED DAL
AC/DC CORE TUBES	
WF86140-1	D03 AC CORE TUBE 4WE6 W/KNOB
WF86138-1	D03 DC CORE TUBE 4WE6 W/KNOB



D05 PARTS

PART NUMBER	DESCRIPTION
SEAL KITS	
WF86178	WF4WE10 SEAL KIT BUNA
WF86179	WF4WE10 SEAL KIT VITON
DIN COILS	
WF86122	COIL D05 DIN 4WE10 12 VDC
WF86142	COIL D05 DIN 4WE10 24 VDC
WF86243	COIL D05 DIN 4WE10 W110R/(G96) VDC
WF86244	COIL D05 DIN 4WE10 W220R/(G196) VDC
WF86143	COIL D05 DIN 4WE10 110 VAC
WF86234	COIL D05 DIN 4WE10 220 VAC
WIRE HOUSING COILS	
WF86151	COIL D05 4WE10 12 VDC WIRE DAL
WF86150	COIL D05 4WE10 24 VDC WIRE DAL
AC/DC CORE TUBES	
WF86200	D05 AC CORE TUBE 4WE10 W/KNOB
WF86201	D05 DC CORE TUBE 4WE10 W/KNOB

ELECTRICAL DIN CONNECTORS

PART NUMBER	DESCRIPTION
WF86186	DIN CONNECTOR 24VDC VDR SURGE SUPPRESSOR
WF86189	DIN CONNECTOR 24V AC/DC RECTIFIER + VDR SUPPRESSOR
WF86147	DIN CONNECTOR 12/24 VDC W/LIGHT
WF86141	DIN CONNECTOR 110/120 VAC W/LIGHT
WF86241	DIN CONNECTOR W/RECTIFIER 110/120 VAC to 96 VDC
WF86242	DIN CONNECTOR W/RECTIFIER 220/240 VAC to 196 VDC

FluiDyne supports the distributors providing local knowledge and assistance to fluid power customers.

Our people provide extensive support:

- Engineering expertise
- Decoding special part number
- Identification of parts within units
- Advice on component repair and assembly
- Component failure analysis
- Massive local stock
- New application component selection
- Same day shipments
- 18 month warranty



Reman Units & Parts Available for Racine, Oilgear, Bosch, Continental and More.

Powered by Customer Service!

Call, Email or LiveChat us Today.



31915 Groesbeck Highway • Fraser, Michigan 48026
PH: (586) 296-7200 • FAX: (586) 296-7210
sales@FluiDyneFP.com

www.FluiDyneFP.com



FluiDyne Contact Info and Website



11/2017