



FluidDyne™
FLUID POWER

Steering Control Units 211, 212 & 213

- Precise and Responsive Control
- Separates the Load from the Control System
- Lowers Required Operating Torque
- Mobile Applications
- 18 Month Warranty



www.FluidDyneFP.com

Our People Make the Difference



Our promise at FluiDyne is to provide the fluid power industry with high quality, fully tested and technically supported hydraulic pumps, motors and valves. We understand and value the local service and support provided by repair shops, resellers and distributors to the OEM's and users of fluid power applications. We do not compete with our customers, but rather we partner with them. FluiDyne supports the channels of distribution that contribute to our partners' success.

Our strength is our people. We focus on personal development and a long term commitment to our staff. We recognize knowledgeable people are a valuable part of the service a business organization provides. We stress a commitment to learning and customer support at every level of the FluiDyne organization. Accounting, Customer Service, Engineering, Inventory, Marketing, Management, Manufacturing, Quality and Shipping all work together to serve our customer. We believe in treating everyone inside and outside the company with professionalism and respect.

Application and technical support for our products is easily accessible, and we pride ourselves in not having a switchboard or phone tree. The person, who picks up the phone, helps the customer. We like it simple, we like it direct. Our inventory is extensive and our people are skilled at assembly, modifications and testing. Our product leaves the factory fast (often the same day) and it leaves correct, tested and documented.



Call, email or visit our website to learn more about FluiDyne. Our products and people make us special.

**Visit our Website
to learn more about
what makes us so
great!**



- **18 month warranty**
- **Blind drop shipments**
- **Custom proprietary software allows immediate and accurate technical support, quoting, order entry and bill of material information**
- **Extensive Michigan inventory**
- **ISO Certified 9001:2015**
- **New FluiDyne and remanufactured products**
- **Outstanding customer service**
- **Performance you have come to expect**
- **Same day shipments**
- **Standard and modified products**
- **Multiple test stands which allow for quick 100% testing of all units shipped**



www.FluiDyneFP.com

FluiDyne 200 Series

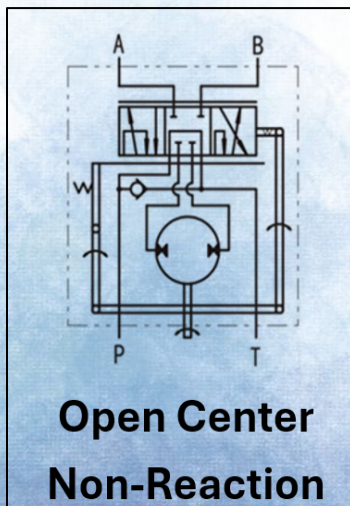
Our steering control unit (SCU) operates as part of a fully hydraulic steering system, there is no mechanical connection between the components. The rotary valve directs the fluid between the appropriate ports (P, T, A, B). Our motors are fully tested and come with 18 month warranty. **Features include:**

- Minimize or eliminate steering linkage, reducing cost and weight
- Isolates the load forces from the control system
- Reduces the amount of required torque to operate

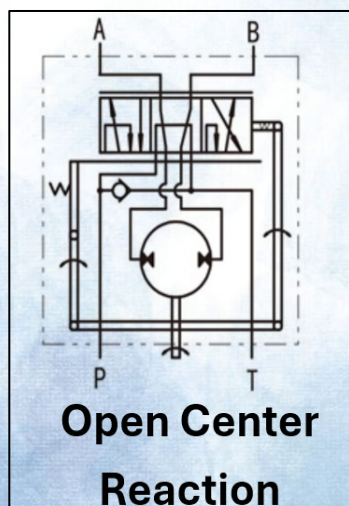
Function Code	1, 2 & 3				
Displacement (cc)	80	100	125	160	200
Flow (gpm)	2.1	2.6	3.3	4.2	5.3
Max Pressure (psi)	2500				
Max Back Pressure (psi)	360				
Weight (lb)	12.8	13.0	13.3	13.8	14.2
L Dimension (mm)	133	136	139	144	149

Function Code	1 & 3			
Displacement (cc)	250	280	315	400
Flow (gpm)	6.6	7.4	8.3	10.6
Max Pressure (psi)	2500			
Max Back Pressure (psi)	360			
Weight (lb)	14.7	15.1	15.5	16.4
L Dimension (mm)	155	160	165	175

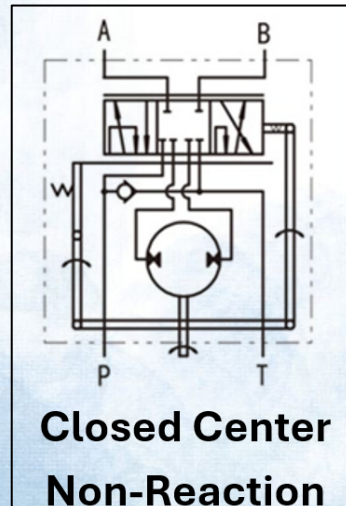
Function Code 1



Function Code 2



Function Code 3



Model Codes

Part numbers highlighted in green are stocked at FluidDyne

Replaces Charlynn Series 3		Rated Flow GPM	Port Connection	Displacement cc			
				80	100	125	160
Open Center	Non-Load Reaction	4	9/16"-18 UNF	WF211-1001	WF211-1002	WF211-1003	
Closed Center	Non-Load Reaction	14		WF212-1009	WF212-1010	WF212-1011	WF212-1012
Load Sensing	Load Reaction	4		WF212-1021	WF212-1022	WF212-1023	WF212-1024

Replaces Charlynn Series 6		Rated Flow GPM	Port Connection	Displacement cc			
				80	100	125	160
Open Center	Non-Load Reaction	8	3/4"-16 UNF	WF211-1007	WF211-1008	WF211-1009	WF211-1010
	Load Reaction			WF211-1047	WF211-1048	WF211-1049	WF211-1050
Closed Center	Non-Load Reaction			WF212-1001	WF212-1002	WF212-1003	WF212-1004
Load Sensing	Non-Load Reaction			WF213-4001	WF213-4002	WF213-4045	WF213-4042
		Rated Flow GPM	Port Connection	200	250	315	Call us today if you have any questions at (586) 296-7200
Open Center	Non-Load Reaction	8	3/4"-16 UNF	WF211-1011	WF211-1012	WF211-1158	
	Load Reaction			WF211-1051	WF211-1052		
Closed Center	Non-Load Reaction			WF212-1005	WF212-1006	WF212-1070	
Load Sensing	Non-Load Reaction			WF213-4046	WF213-4047	WF213-4044	

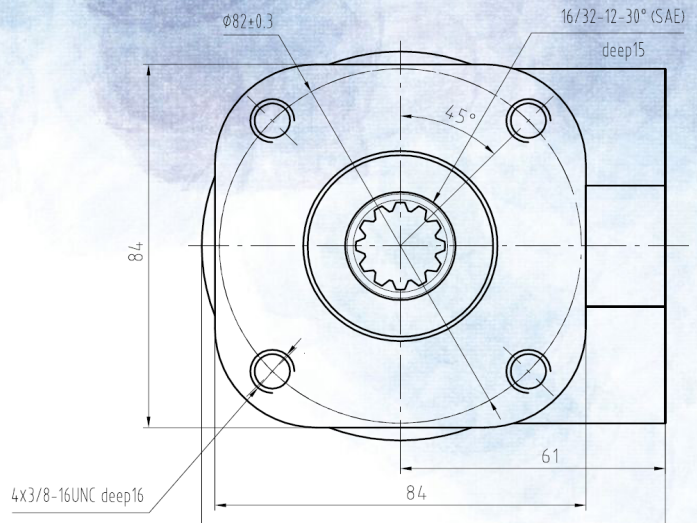
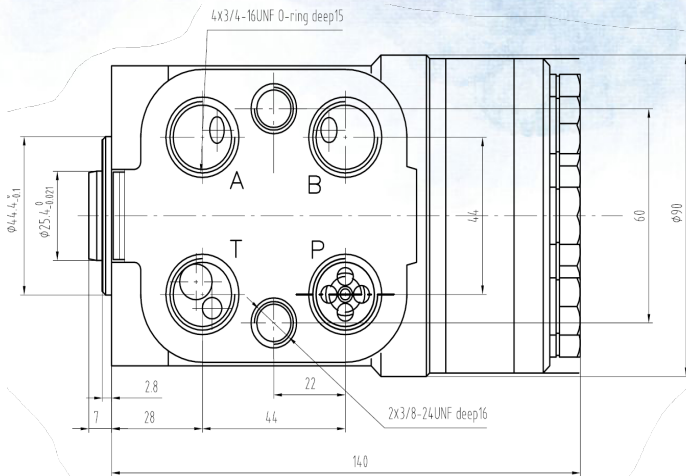
Replaces Charlynn Series 12		Rated Flow GPM	Port Connection	Displacement cc			
				400	500	630	800
Open Center	Non-Load Reaction	16	3/4"-16 UNF	WF211-1038	WF211-1176	WF211-1160	WF211-1041
Closed Center	Non-Load Reaction			WF212-1014	WF212-1015	WF212-1071	WF212-1017
Load Sensing	Non-Load Reaction			WF213-4051	WF213-4048	WF213-4049	WF213-4050

Part numbers highlighted in green are stocked at FluidDyne



Sales@FluidDyneFP.com • (586) 296-7200

Mounting & Shaft

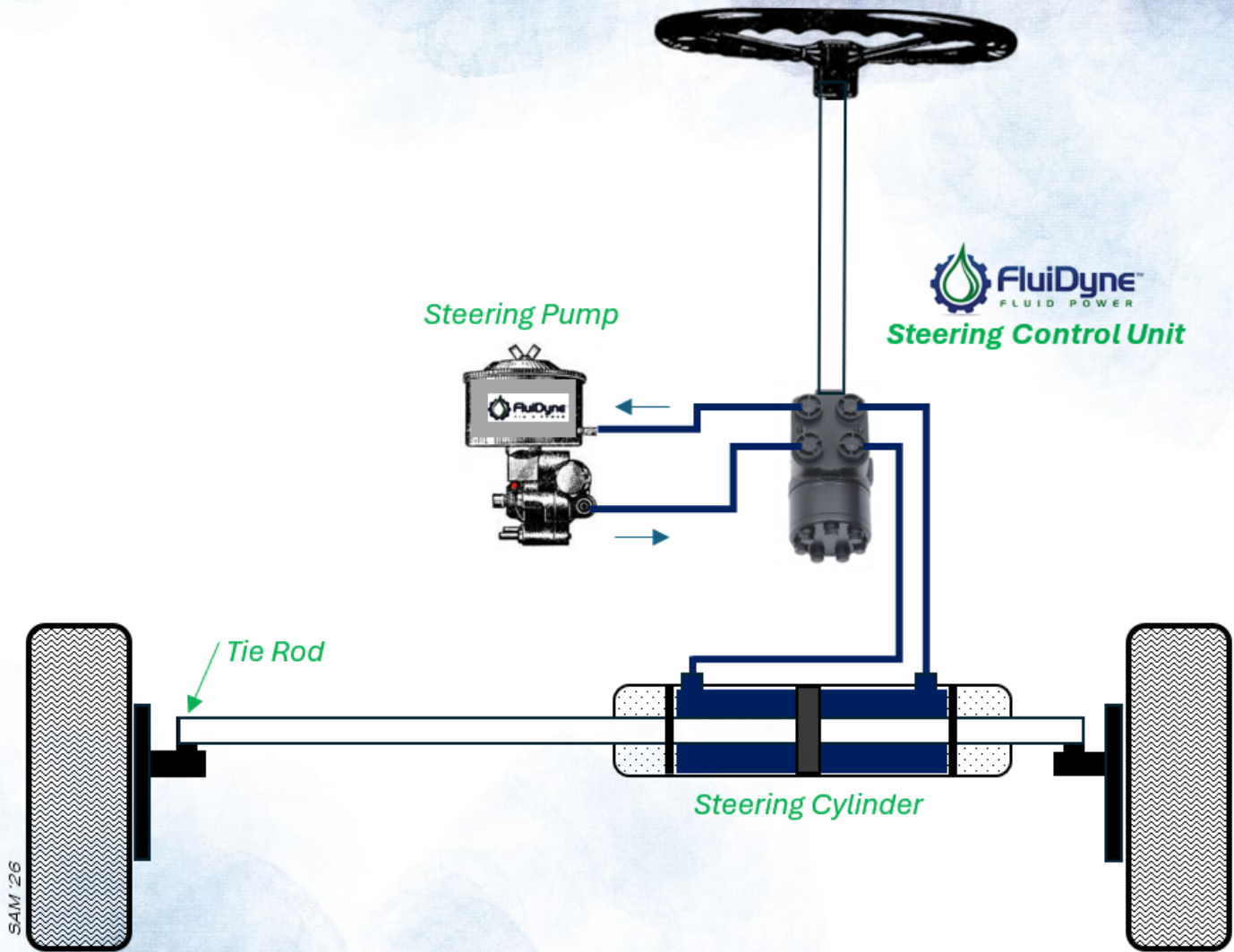



Shaft Data	
Pitch	16/32
Number of Teeth	$\phi 12$
Pitch Diameter	$\phi 19.05$
Base Diameter	16.498
Type of Angle	Side Fit
Class of Fit	5
Major Diameter	$\phi 20.80$
Min. Diameter	$\phi 17.57$
Pin Diameter	$\phi 2.743$
Max. Between Two Pins	15.10-15.30



Steering Control

The FluiDyne 200 Series Steering Control units (orbital valves) are used in hydraulic steering systems. They direct hydraulic oil from the pump into the steering cylinder which turns the wheels.

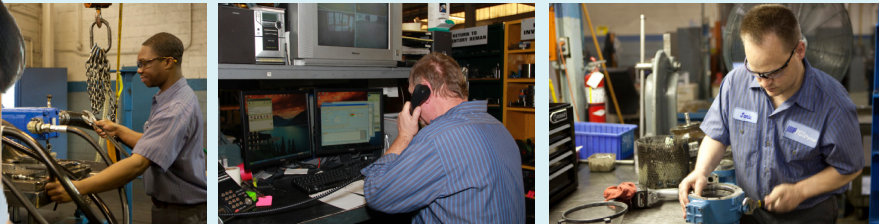




FluiDyne supports the distributors providing local knowledge and assistance to fluid power customers.

Our people provide extensive support:

- Engineering Expertise
- Decoding special part numbers
- Identification of parts within units
- Advice on component repair and assembly
- Component failure analysis
- 18 month warranty
- New application component selection
- Same day shipment



Reman Units & Parts Available for Racine, Oilgear, Bosch, Continental and More!

Powered by Customer Service!

Call, email, chat...we're ready to help!



31915 Groesbeck Highway • Fraser, Michigan 48026
PH: 1-586-296-7200 • FAX: 1-586-296-7210
Email: sales@FluiDyneFP.com

www.FluiDyneFP.com

For most recent brochure, and information on our other products please visit www.fluidynefp.com

