

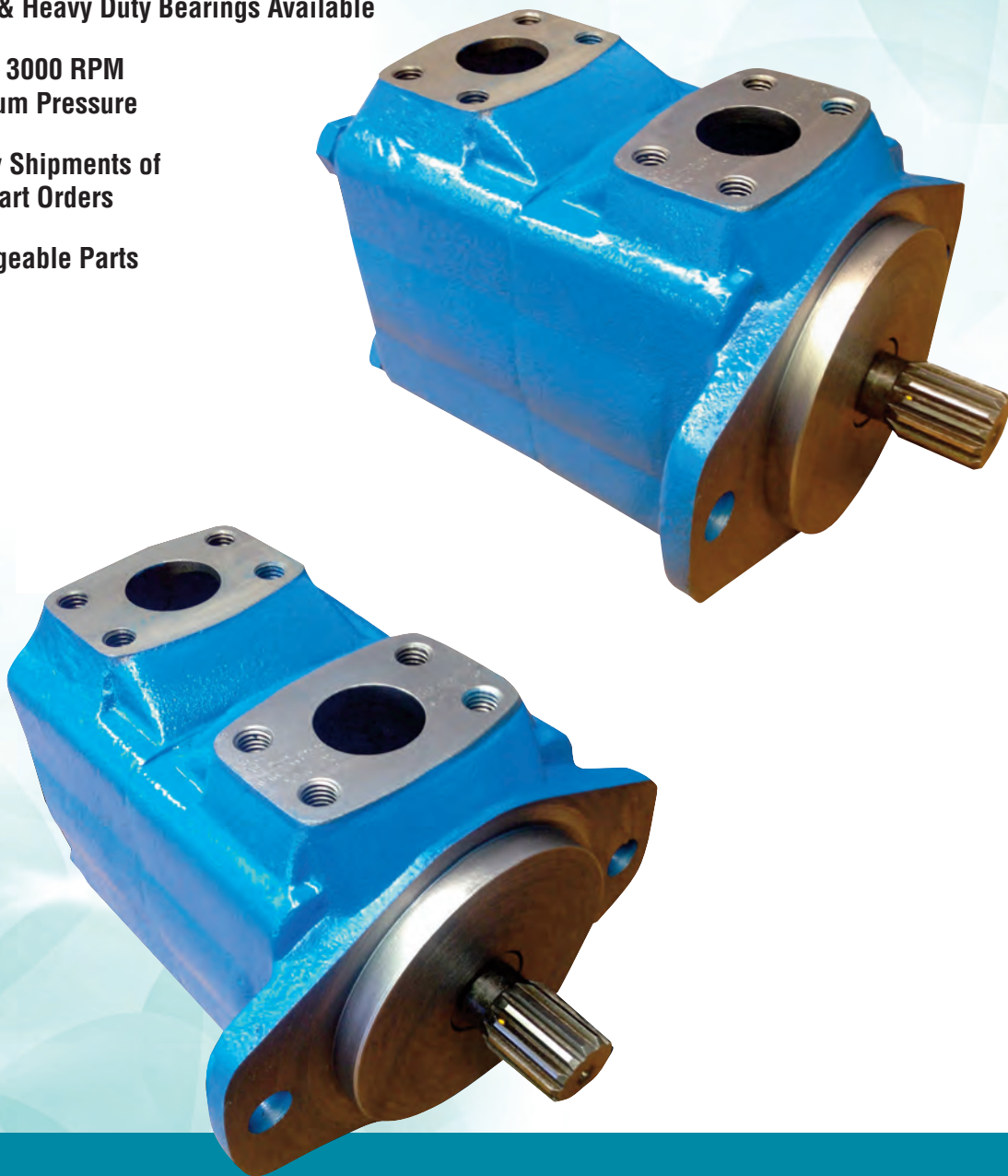


Fluidyne™
FLUID POWER

High Speed - High Pressure Vane Motors

25M, 35M, 45M, 50M

- **Standard & Heavy Duty Bearings Available**
- **Speeds to 3000 RPM at Maximum Pressure**
- **Same Day Shipments of Units or Part Orders**
- **Interchangeable Parts**



www.FluidyneFP.com

Our People Make the Difference

Our promise at FluiDyne is to provide the fluid power industry with high quality, fully tested and technically supported hydraulic pumps, motors and valves. We understand and value the local service and support provided by repair shops, resellers and distributors to the OEM's and users of fluid power applications. We do not compete with our customers; rather we work with our channels as partners in their success and to advance the technology of fluid power.

Our strength is our people. We focus on personal development and a long term commitment to our staff. We recognize knowledgeable people are a valuable part of the service a business organization provides. We stress a commitment to learning and customer support at every level of the FluiDyne organization. Accounting, Customer Service, Engineering, Inventory, Management, Manufacturing, Quality and Shipping all work together to serve our customer. We believe in treating everyone inside and outside the company with professionalism and respect.

Application and technical support for our products is easy to access, with knowledgeable representatives ready to assist you promptly. We like it simple, we like it direct. Our inventory is extensive and our people are skilled at assembly, modifications and testing. Our product leaves the factory fast (often the same day) and it leaves correct, tested and documented. If there is a mistake, we work hard to make it right, quickly and fairly.

Please call or email to learn more about FluiDyne. Our products and people are what makes us special.

- 18 month warranty
- Blind drop shipments
- Custom proprietary software allows immediate & accurate technical support, quoting, order entry & bill of material information
- End customer protection
- Extensive Michigan inventory
- ISO Certified 9001:2008
- New FluiDyne and remanufactured products
- Outstanding customer service
- Performance you have come to expect
- Same day shipments
- Standard & modified products
- Multiple test stands which allow for quick 100% testing of all units shipped



FluiDyne™ High Speed - High Pressure Vane Motors

Dependable

The M Motor is a proven design that has been operating in the field for decades. They are available with either standard or heavy duty bearings.

These motors start out with high efficiencies and operate at those levels throughout the life of the motor. This is inherent in this vane motor design.

The bi-rotational design of these motors lends itself to quick reversal motion. They can be stalled at as high as 65% of maximum pressure rating at 1200r/min without damage.

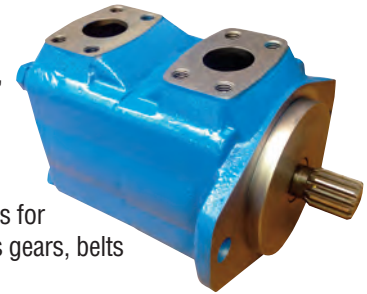
Versatile

This motor design can operate at as low as 100 rpm to as high as 3,000 rpm at maximum pressures. It can run at faster speeds as system pressures decrease.

Because both ports can be pressurized at the same time, the M Motor is perfect for multiple motors connected in a series.

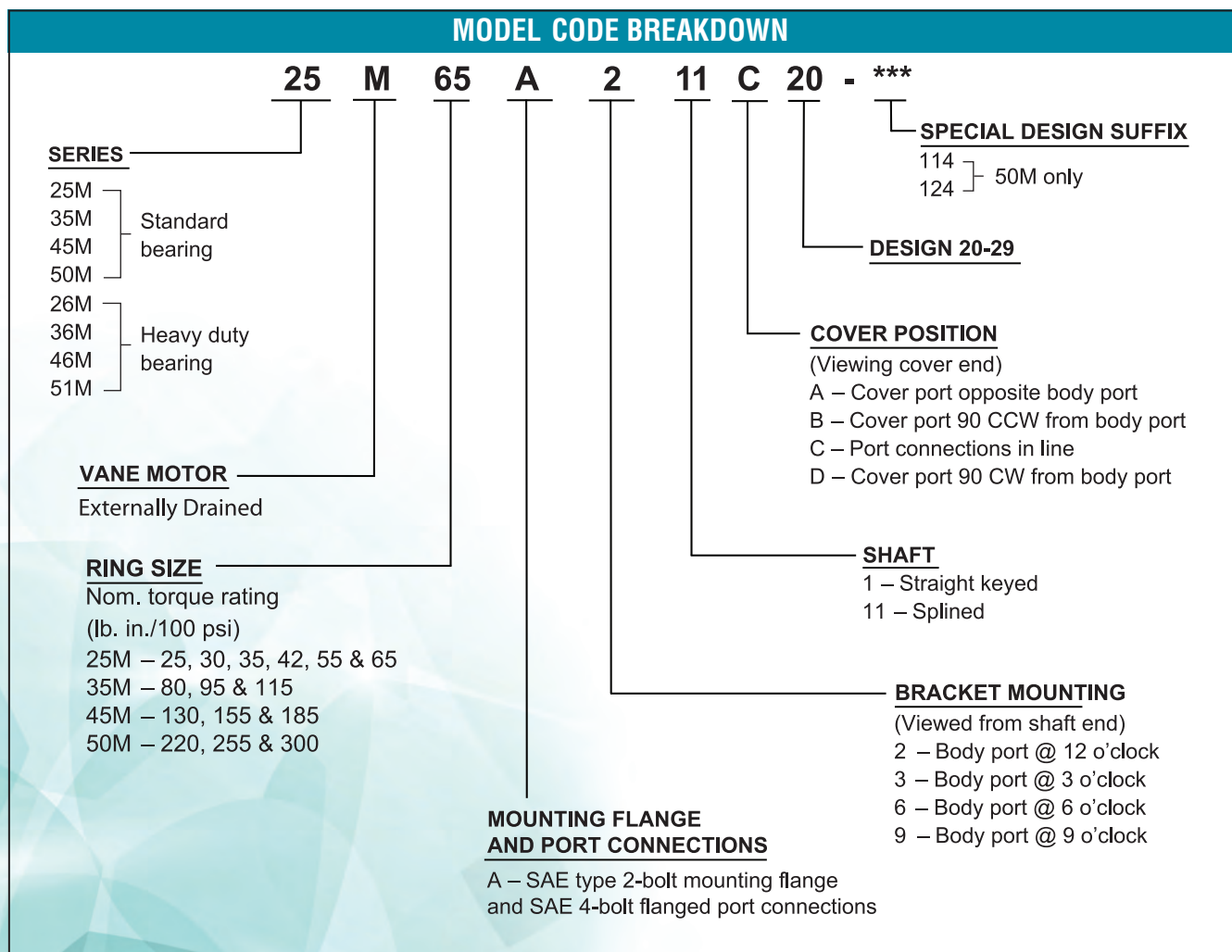
The heavy duty bearing allows for indirect drive options such as gears, belts and pulleys.

Several port position configurations are available.



Serviceable

The internal rotating parts are self contained in a cartridge kit in this design. This makes this motor easily field serviceable. In most cases the motor can stay in place while the ring, rotor, and vanes are replaced with new. Port orientation adjustments too can be done in the field.



FLUIDYNE HIGH SPEED — HIGH PRESSURE MOTORS

PHYSICAL SPECIFICATIONS

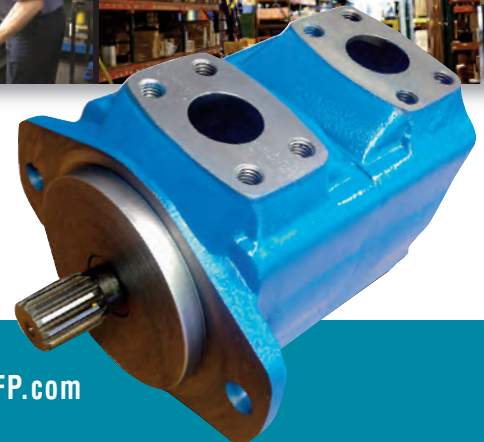
Model Series	Mounting	Std. Shaft Splined	Optional Shaft Keyed	Approx. Weight Lbs.
25M	SAE "B" 2 bolt	7/8"-13 tooth	7/8" x .187 key	40
35M	SAE "C" 2 bolt	1-1/4"-14 tooth	1-1/4" x .312 key	64
45M	SAE "C" 2 bolt	1-1/4"-14 tooth	1-1/4" x .312 key	85
50M	SAE "D" 2 bolt	1-3/4"-13 tooth	1-3/4" x .437 key	160

PERFORMANCE SPECIFICATIONS

Model Series	Torque Nm/6,9 bar (lb. in./100 psi)	Displacement in ³ /r	Flow Input @ 1200 gpm	Max Torque Nm (lb. in.) @ Max. Pressure	Maximum Speeds & Pressure
25M	4.7 (42)	2.68	13.9	115.8 (1025)	4000 r/min @ 500 psi
	6.2 (55)	3.52	18.3	151.4 (1340)	
	7.3 (65)	4.19	21.8	180.8 (1600)	
35M	9.0 (80)	5.10	26.5	221.5 (1960)	3000 r/min @ 2500 psi
	10.7 (95)	6.12	31.8	264.4 (2340)	
	13.0 (115)	7.44	38.6	320.9 (2840)	
45M	14.7 (130)	8.42	43.7	361.6 (3200)	3200 r/min @ 500 psi 2400 r/min @ 2500 psi
	17.5 (155)	9.96	51.7	429.4 (3800)	
	20.9 (185)	11.79	61.3	502.9 (4450)	
50M	24.9 (220)	14.11	73.3	615.9 (5450)	3200 r/min @ 500 psi 2400 r/min @ 2500 psi
	28.8 (255)	16.36	85.0	717.6 (6350)	
	33.9 (300)	19.35	100.5	844.1 (7470)	

•114 suffix: 2500 psi, counterclockwise
2250 psi, clockwise

•124 suffix: 2500 psi, bi-directional



PUMPS & MOTORS

▲ FluiDyne

■ Remanufactured products

◆ Veljan

VICKERS / EATON

VHO / VQ Single, Double & Triple*

- ▲ ■ 20, 25, 30, 35, 45 (V/VQ/VT) 50V
- ▲ ■ 2520, 3520, 3525, 4520, 4525, 4535 (V/VQ)
- ▲ ■ 2520, 3520, 3525, 4520, 4525, 4535 VQSV10
- ▲ ■ Cart Kits available for all sizes

*Caterpillar part numbered pumps also available

Round Pumps

- V104/5, V108/9, V110/1, V124/5, V128/9, V134/5
- V144/5, V148/9, V350/3/6, V360/1/2, V368/9/70
- VC108, 138, 148 Combination Pumps

Square Pumps

- ▲ ■ V10F, V10NF, V10P, V20F, V20NF, V20P
- ▲ ■ V2010F, V2010NF, V2010P, V2020F, V2020NF, V2020P
- ▲ ■ V210, V214, V230

Transmissions

- TA15, 19, 1919, 19V

Motors

- MHT 32, 50, 70, 90, 110, 150, 250, 330, 440, 500, 750, 1000
- ▲ ■ 25M, 26M, 35M, 36M, 45M, 46M, 50M
- ▲ ■ M2-210
- ▲ ■ MFB 5, 10, 20, 29
- ▲ ■ MMFB 5, 10, 20, 29

Piston Pumps

- ▲ ■ PVH 57, 74, 98, 131, 141
- ▲ ■ PVE 12, 19, 21, 27*, 35*, 47*, 62*
- ▲ ■ PVB 5, 6, 10, 15, 20, 29, 45, 45A, 90*
- ▲ ■ PVQ 10, 13, 20, 25*, 32, 40, 45
- PVM 18, 20, 45, 50, 57, 63, 74, 81, 98, 106, 131, 141
- ▲ ■ PFB/MPFB 5, 6*, 10, 15*, 20*, 29*, 45*

*Only available in reman

DENISON

- PV6, 10, 15, 20, 29

OILGEAR

- PVW (W) (H) 04, 06, 10, 11, 15, 20, 25, 34, 45, 60
- PVW (J) 11, 14, 22, 25, 34, 46, 64, 76, 98, 130
- PVG 048, 065, 075, 100, 130, 150

VELJAN

- ◆ Single T6, T7
- ◆ Double T6, T67, T7
- ◆ Triple T6, T67, T7
- ◆ Drive Train T6*R
- ◆ M4C, M4D, M4E
- ◆ M3B
- ◆ TXB1/TXB2

GEROLER/GEROTOR MOTORS

- ▲ H SERIES (101), FM1
- ▲ S SERIES (103), FM3
- ▲ 2000, 4000 (104, 109), FM4, FM9
- ▲ 6000, 10,000 (112, 119), FM19
- ▲ J SERIES (129), FM29
- ▲ 500 Series (500/501), FM50
- ▲ 211 Series

REXROTH

- ▲ ■ A10V(S) 10, 18, 28, 45, 60, 63, 71, 74, 100, 140
- ▲ ■ A4V(S) 40, 071, 125, 180, 250

GEAR PUMPS

- ▲ C101/102 Dump
- ▲ Aluminum Gear

RACINE/BOSCH

- PSV 10, 15, 20, 25, 40, 80, 100
- PVF, PVQ, PVR
- PVK, PVT, PVS
- VPV
- ▲ ■ H20, H80

INTERCHANGES WITH: EATON • SAUER - DANFOSS • WHITE • PARKER / ROSS / TRW • CHARLYNN

VALVES

Relief Valves

- ▲ ■ CT/CG/CS 5/CS/CF* 03, 06, 10
- ▲ ■ R/C/T/, R/C/S*, RG/RCG 03, 06, 10
- ▲ ■ C175
- ◆ R1E Remote Relief

Check Valves

- ▲ ■ C5G, C2
- ▲ ■ 4CT, 4CG
- DT8P1
- ◆ C5V 06, 08, 10, 12

Directional Valves

- ▲ ■ D03 - DG4V3, 4WE6
- ▲ ■ D05 - DG4S401, 4WE10
- ▲ ■ DG5V5, DG5S4 02*, DG5S4 04, 4WEH10, 4WEH16
- ▲ ■ D08 - DG5S4 06, DG5S8/H8, 4WEH25
- ▲ ■ DG17S/V, D03/D05

*Only available in reman

Flow Control Valves

- ▲ ■ FCG 02/03

Pressure Controls

- ▲ ■ X (C) G OR T 03, 06, 10

*Only available in reman

Flange Mounted Valves

- ◆ R5V/R5S/R5U: 06, 08, 10, 12
- ◆ C5V 06, 08, 10, 12

Unloading Relief Valves

- ▲ ■ URG/T 1/2, 06/10

Stack Modules

- ▲ ■ DGM Stacks, Flow Control, Reliefs, Checks, Pressure Controls (D03, 5, 7, 8)

Needle Valves (SAE/NPT)

- ▲ ■ 1/8" through 1-1/4"*

*Manufacturers names and numbers are for reference only

FluiDyne has a full range of replacement filters elements and filter housings for: Pall • Hydac • Hycon • Schroeder • Vickers • Parker

Fluidyne supports the distributors providing local knowledge and assistance to fluid power customers.

Our people provide extensive support:

- Engineering expertise
- Decoding special part numbers
- Identification of parts within units
- Advice on component repair and assembly
- Component failure analysis
- New application component selection
- Same day shipments
- 18 month warranty



Reman Units & Parts Available for Racine, Oilgear, Bosch, Continental and More.

Powered by Customer Service!

Call, email, chat...we're ready to help!



31915 Groesbeck Highway • Fraser, Michigan 48026
PH: 586-296-7200 • FAX: 586-296-7210
Email: sales@FluidyneFP.com

www.FluidyneFP.com

For most recent brochure, and information on our other products please visit www.fluidynefp.com



Fluidyne Contact
Info and Website



8/2024